

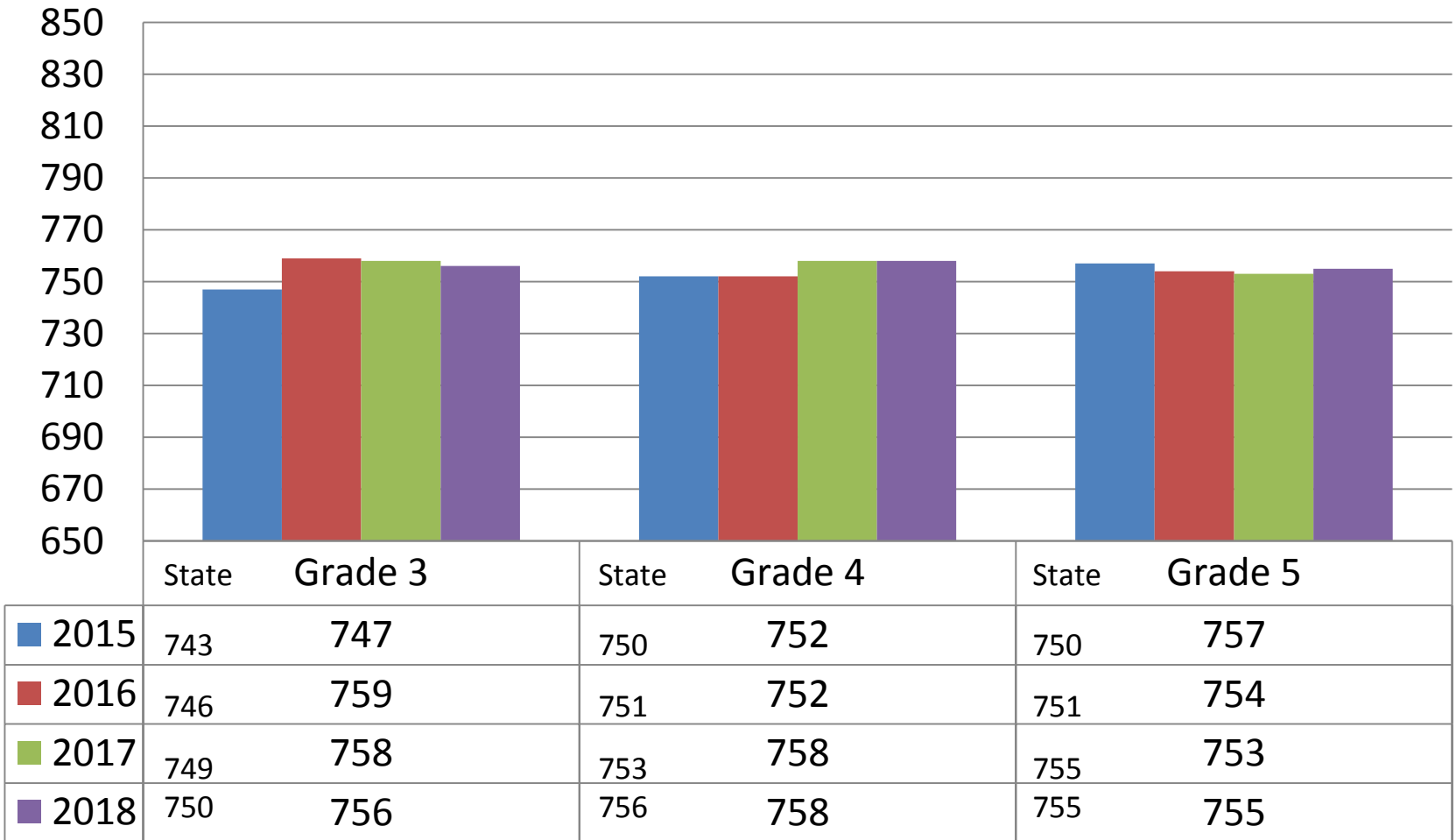
PARCC RESULTS

4 Year Comparison

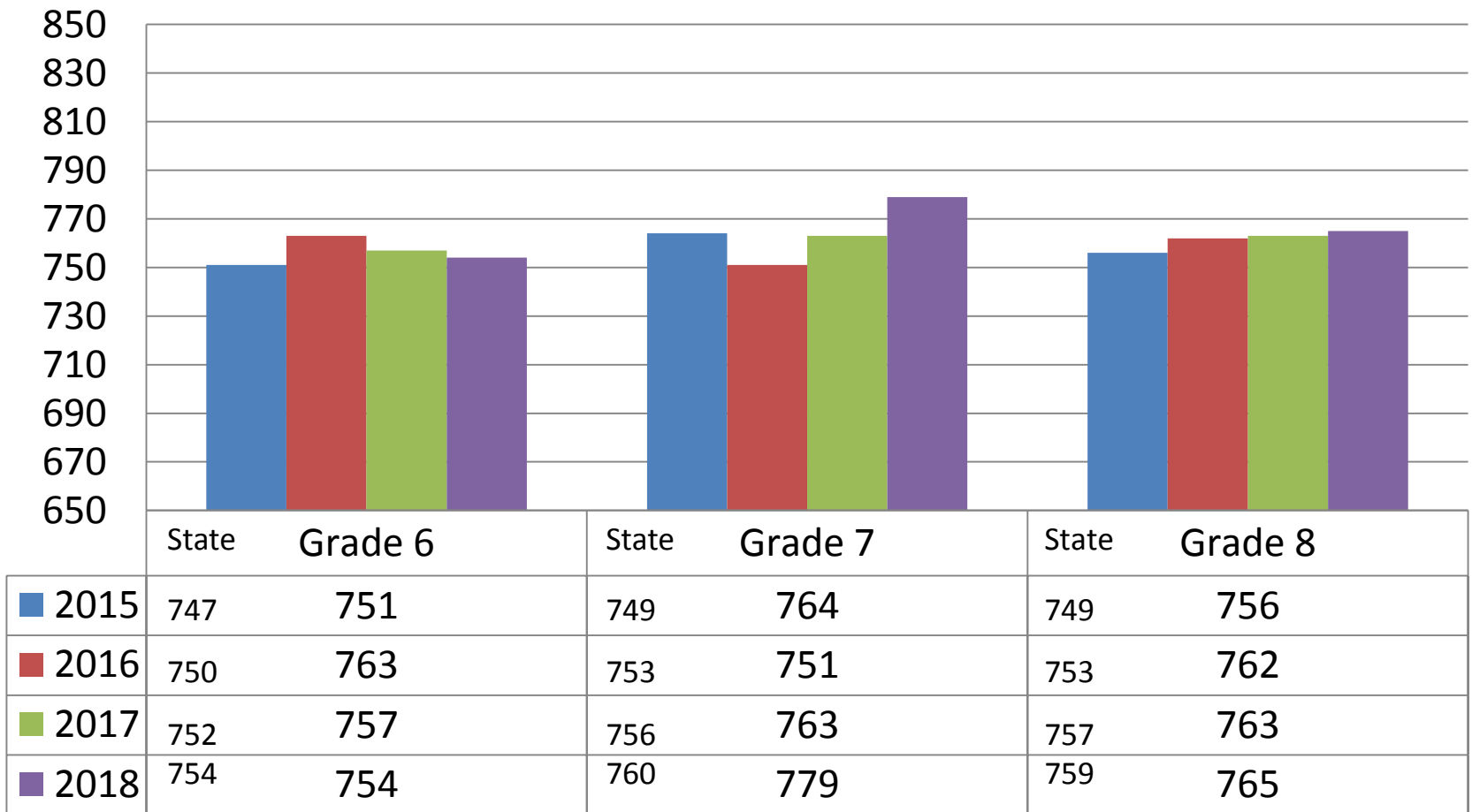
Boonton School District

October 8, 2018

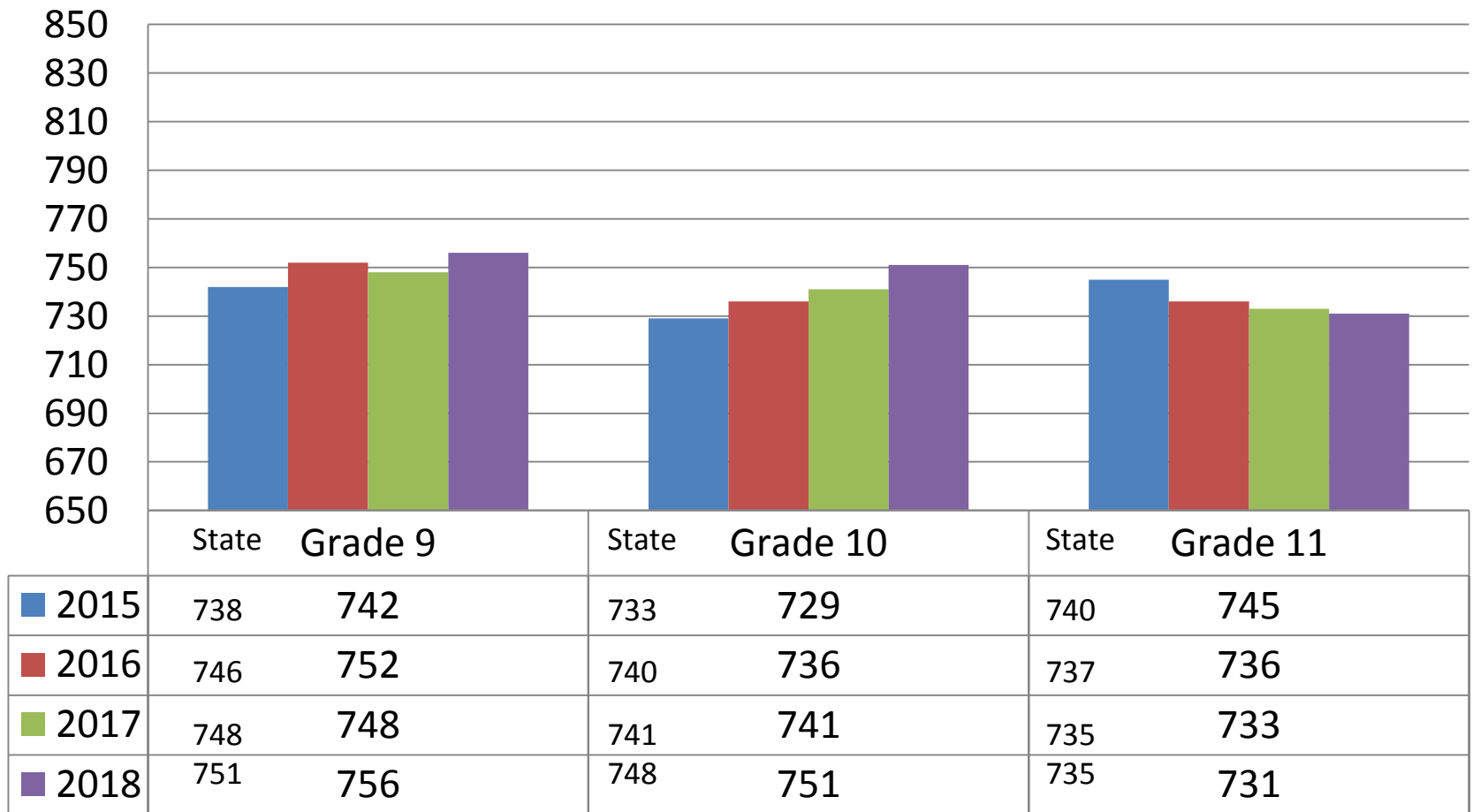
Comparison of Spring 2015, 2016 & 2017 Overall English Language Arts/Literacy Scores



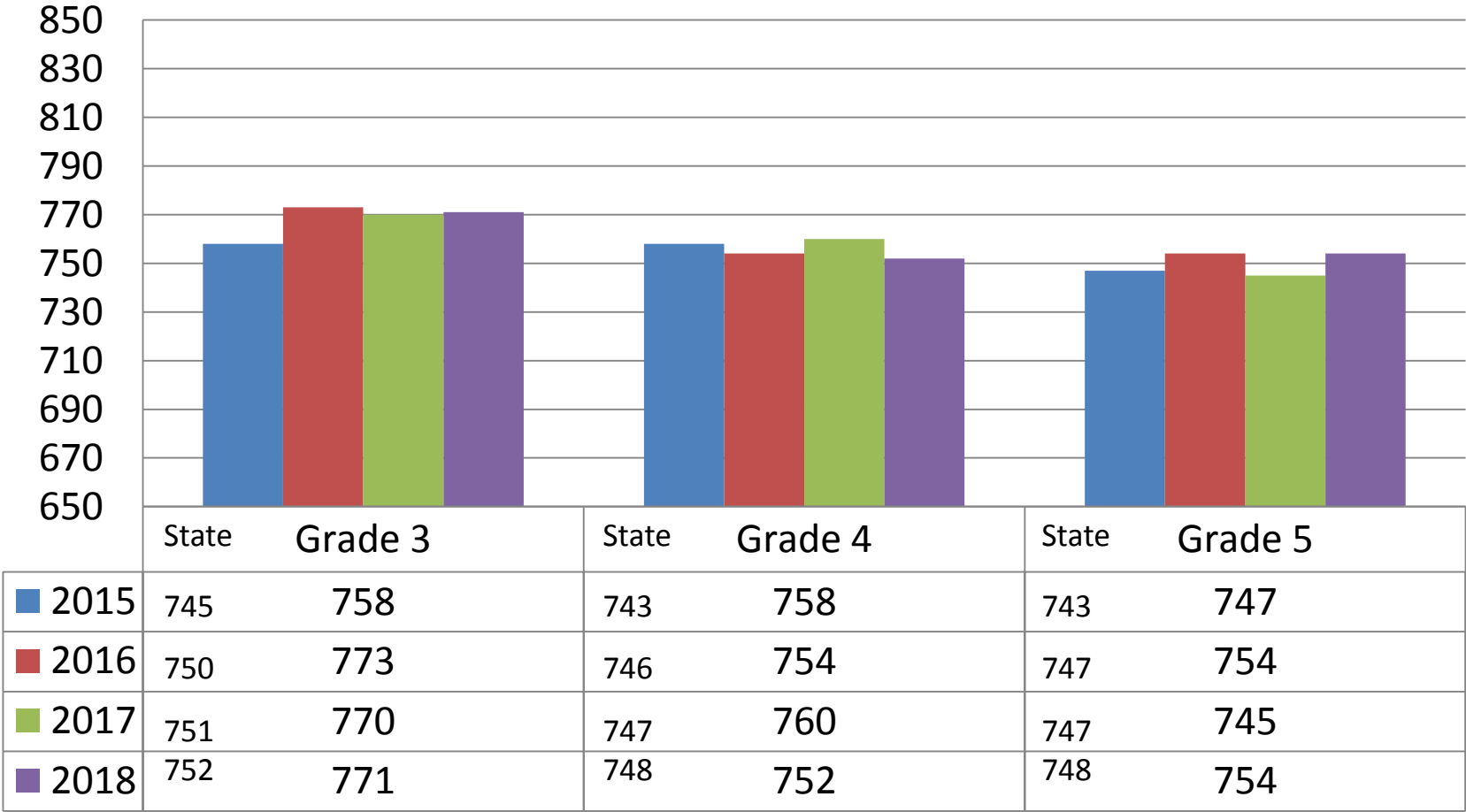
Comparison of Spring 2015, 2016 & 2017 Overall English Language Arts/Literacy Scores



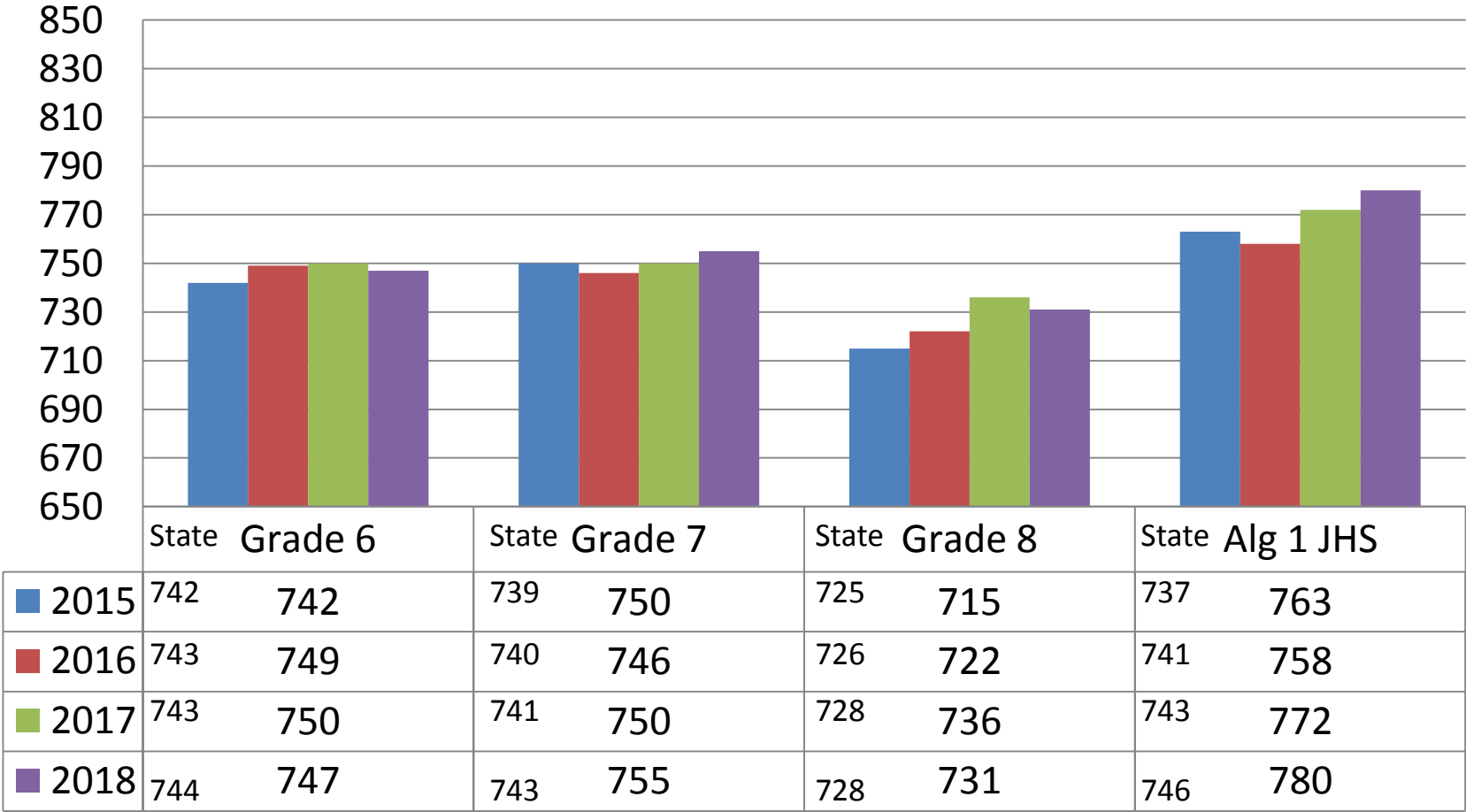
Comparison of Spring 2015, 2016 & 2017 Overall English Language Arts/Literacy Scores



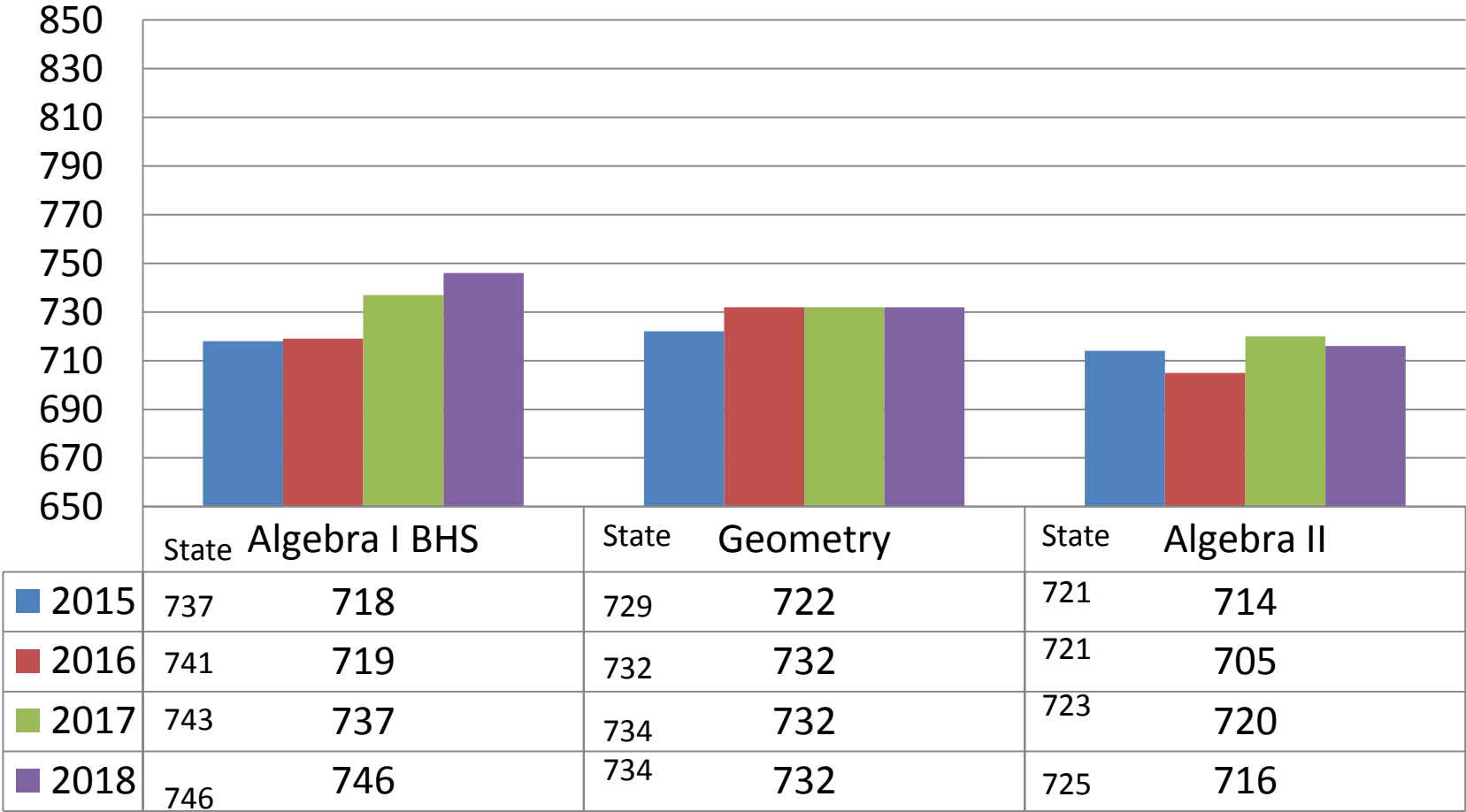
Comparison of Spring 2015, 2016 & 2017 Overall Mathematics Scores



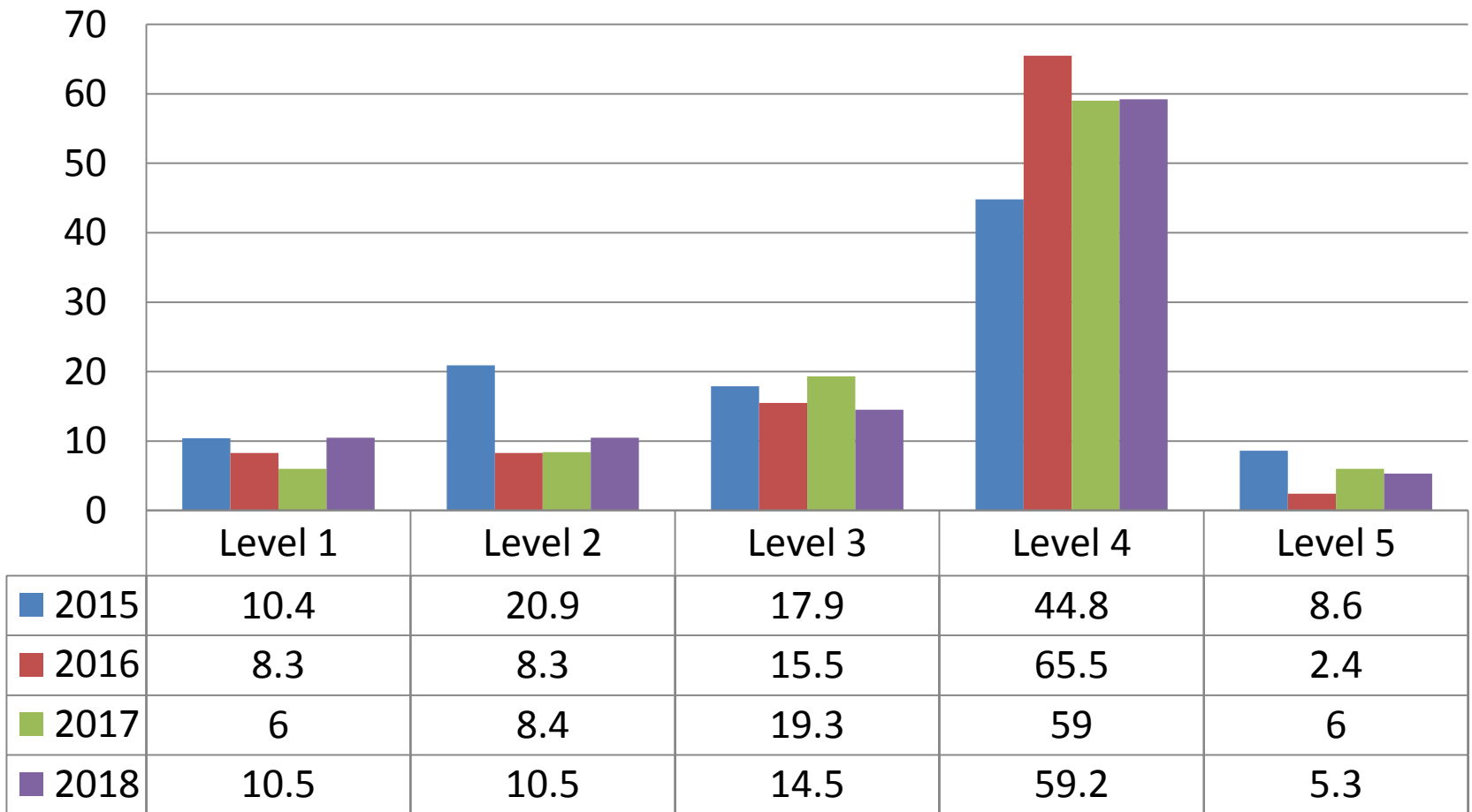
Comparison of Spring 2015, 2016 & 2017 Overall Mathematics Scores



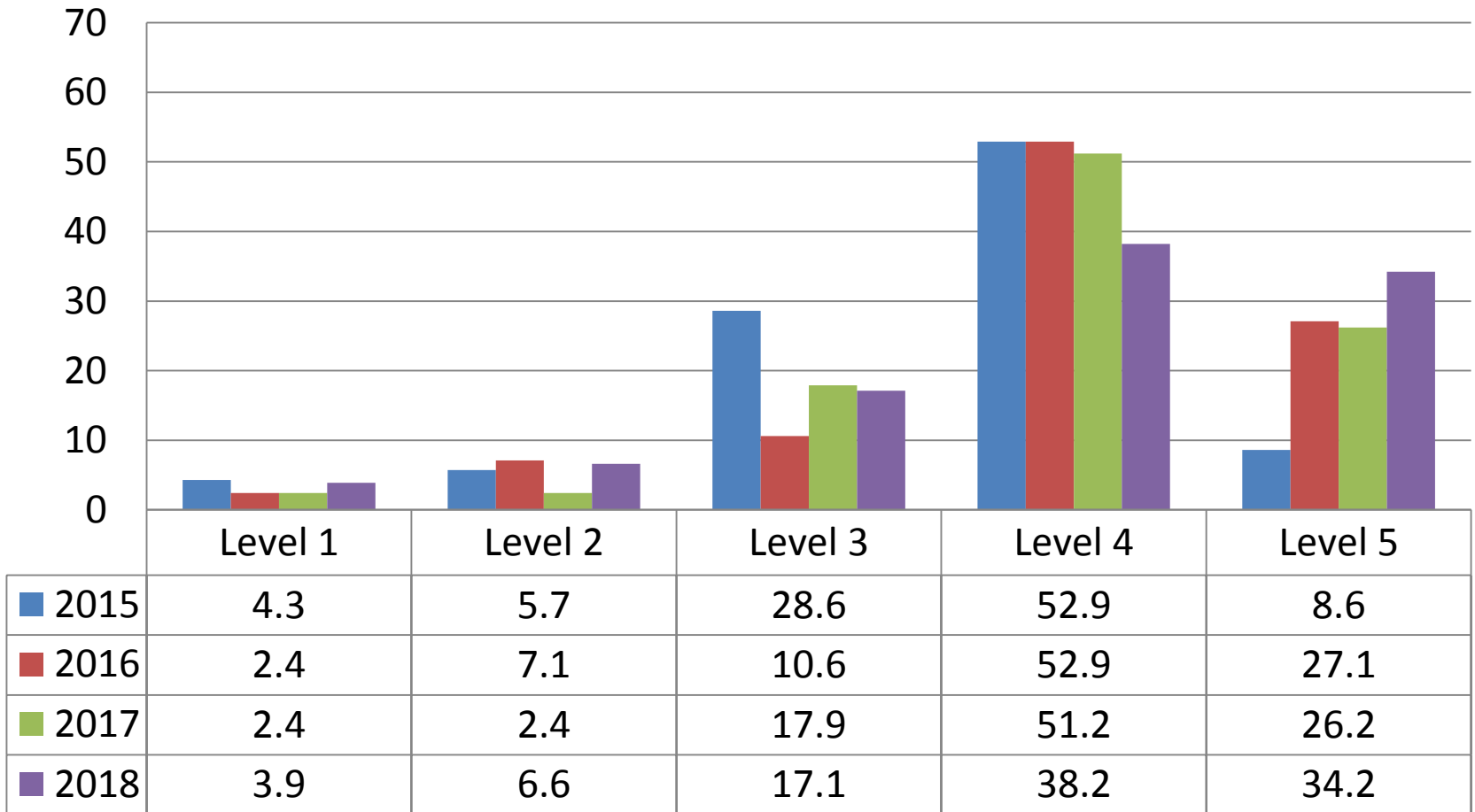
Comparison of Spring 2015, 2016 & 2017 Overall Mathematics Scores



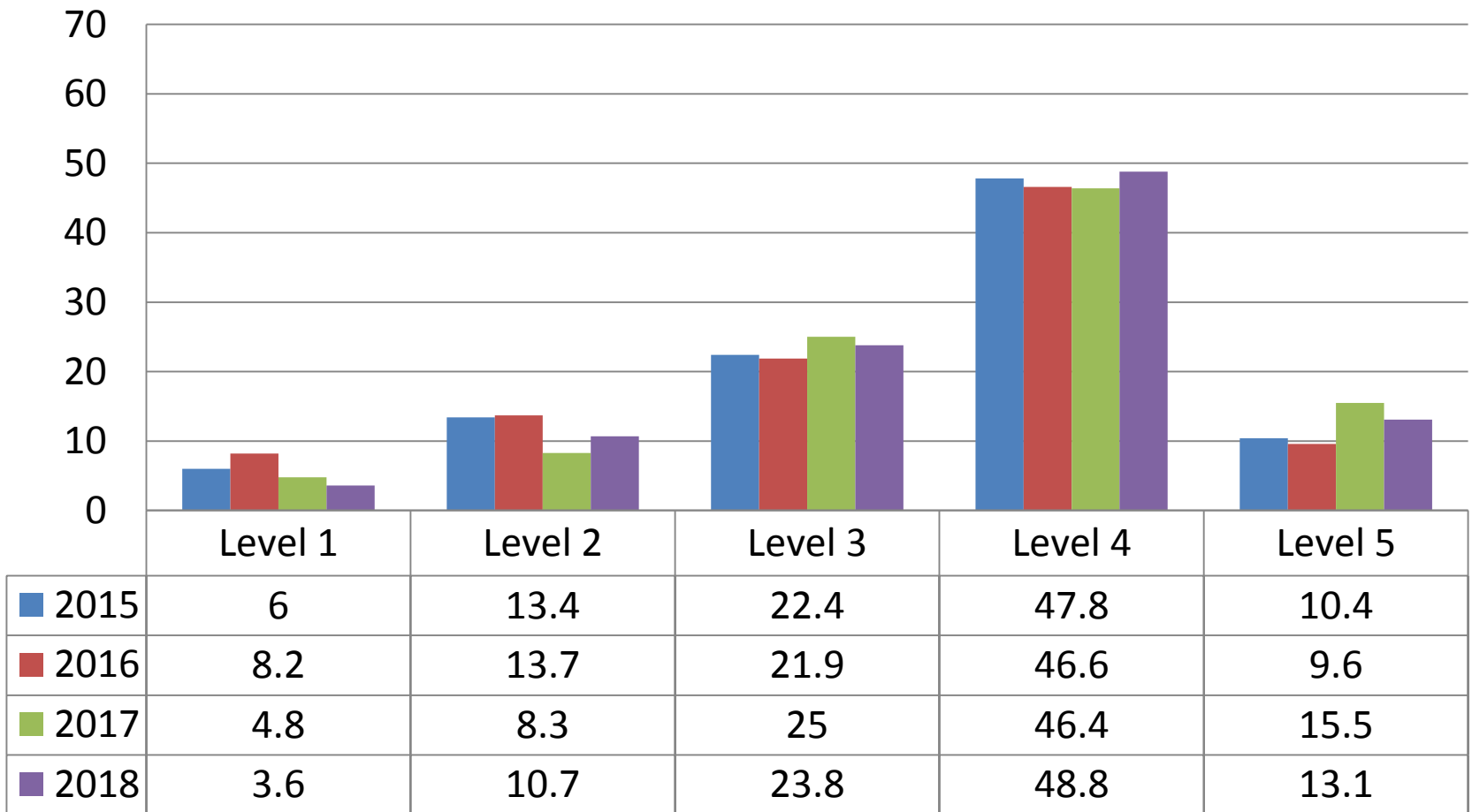
Grade 3 English Language Arts/Literacy Percent Per Level



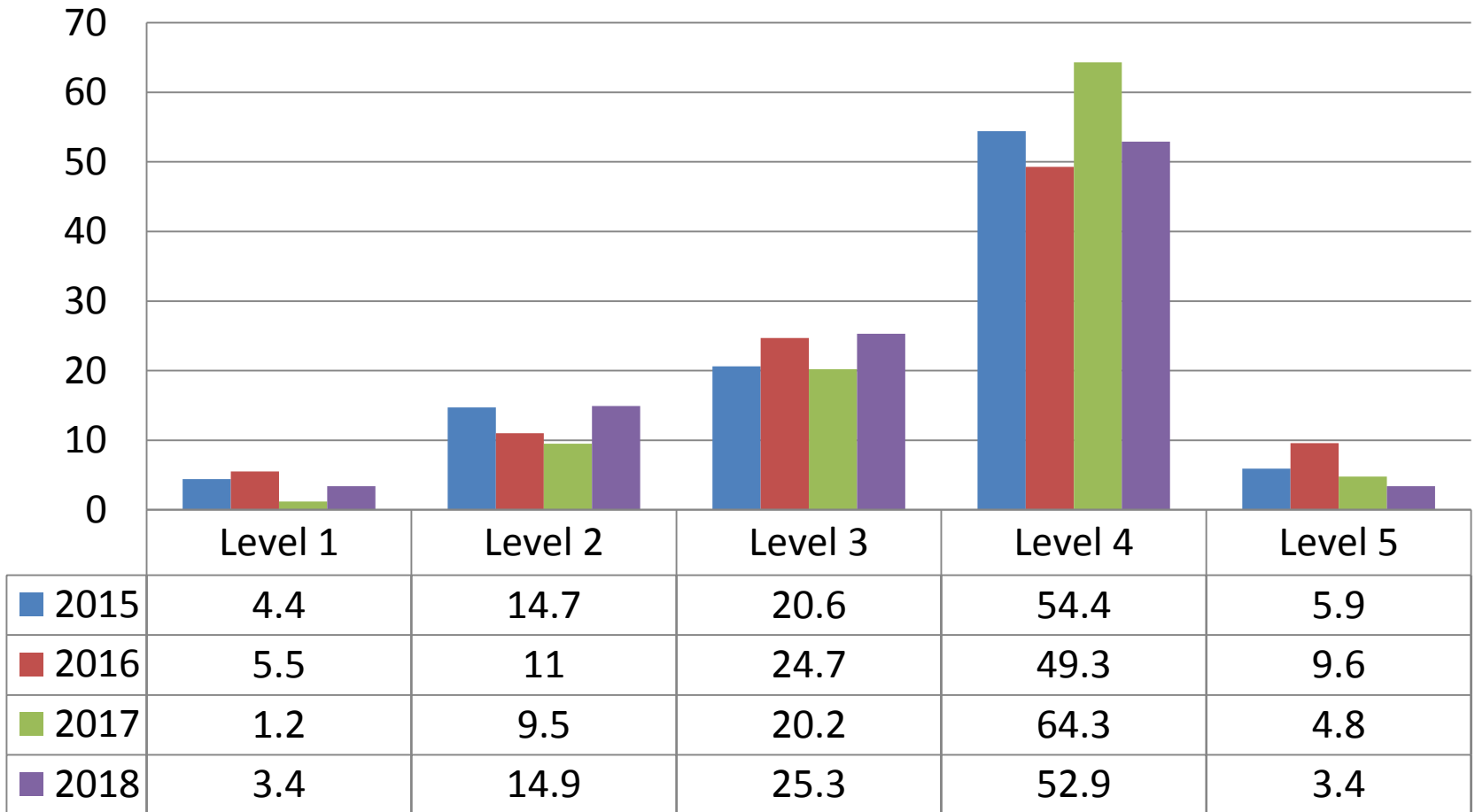
Grade 3 Mathematics Percent Per Level



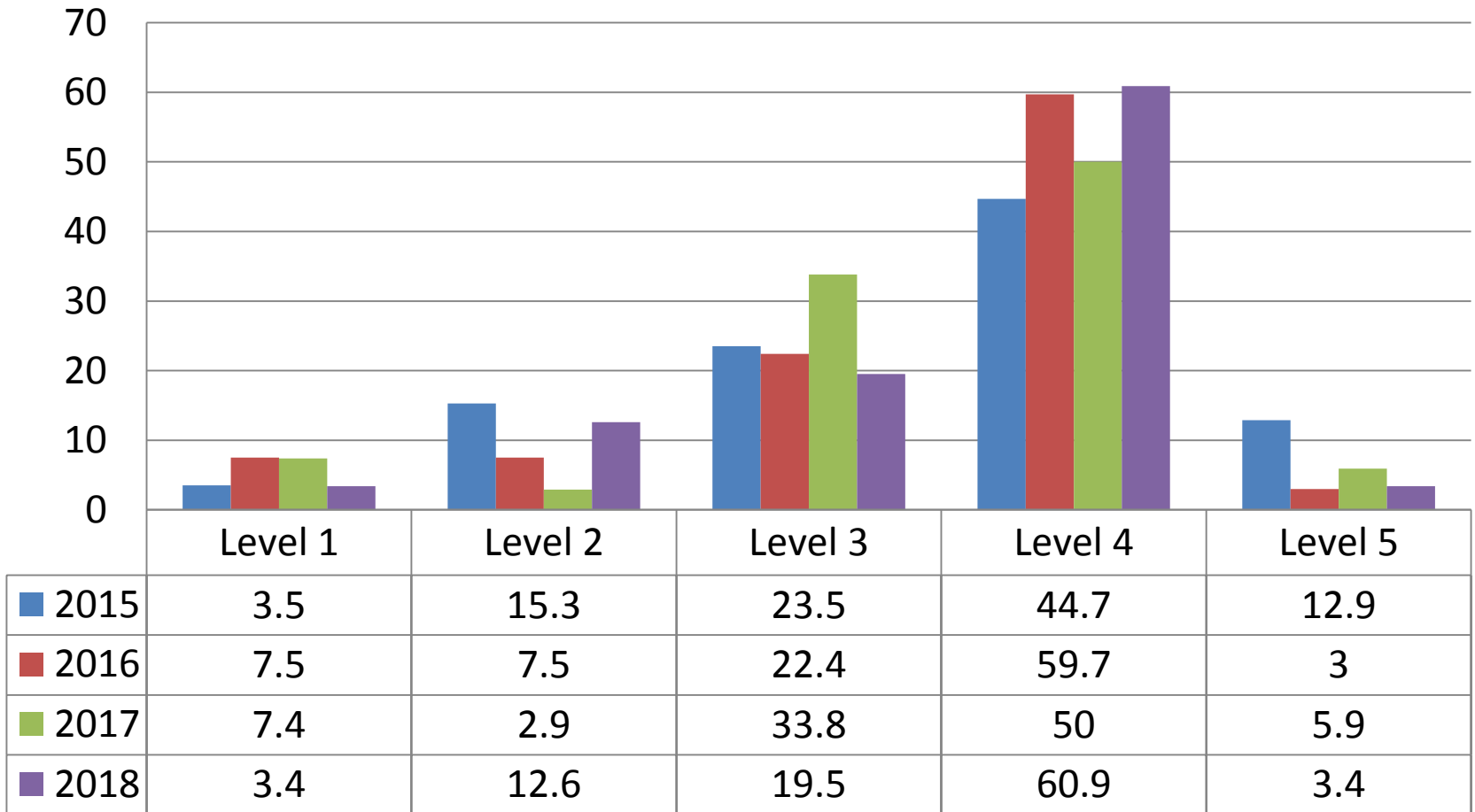
Grade 4 English Language Arts/Literacy Percent Per Level



Grade 4 Mathematics Percent Per Level

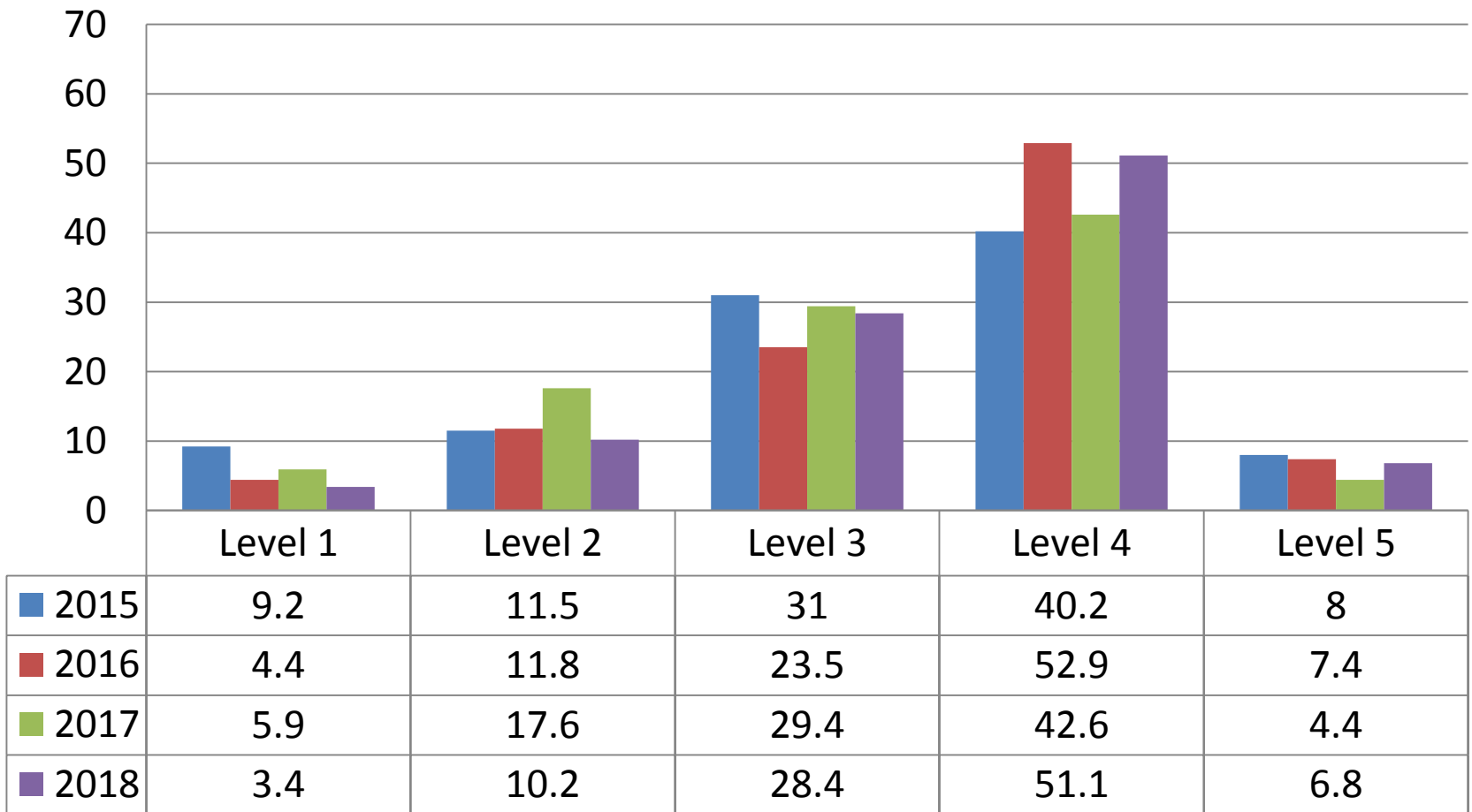


Grade 5 English Language Arts/Literacy Percent Per Level

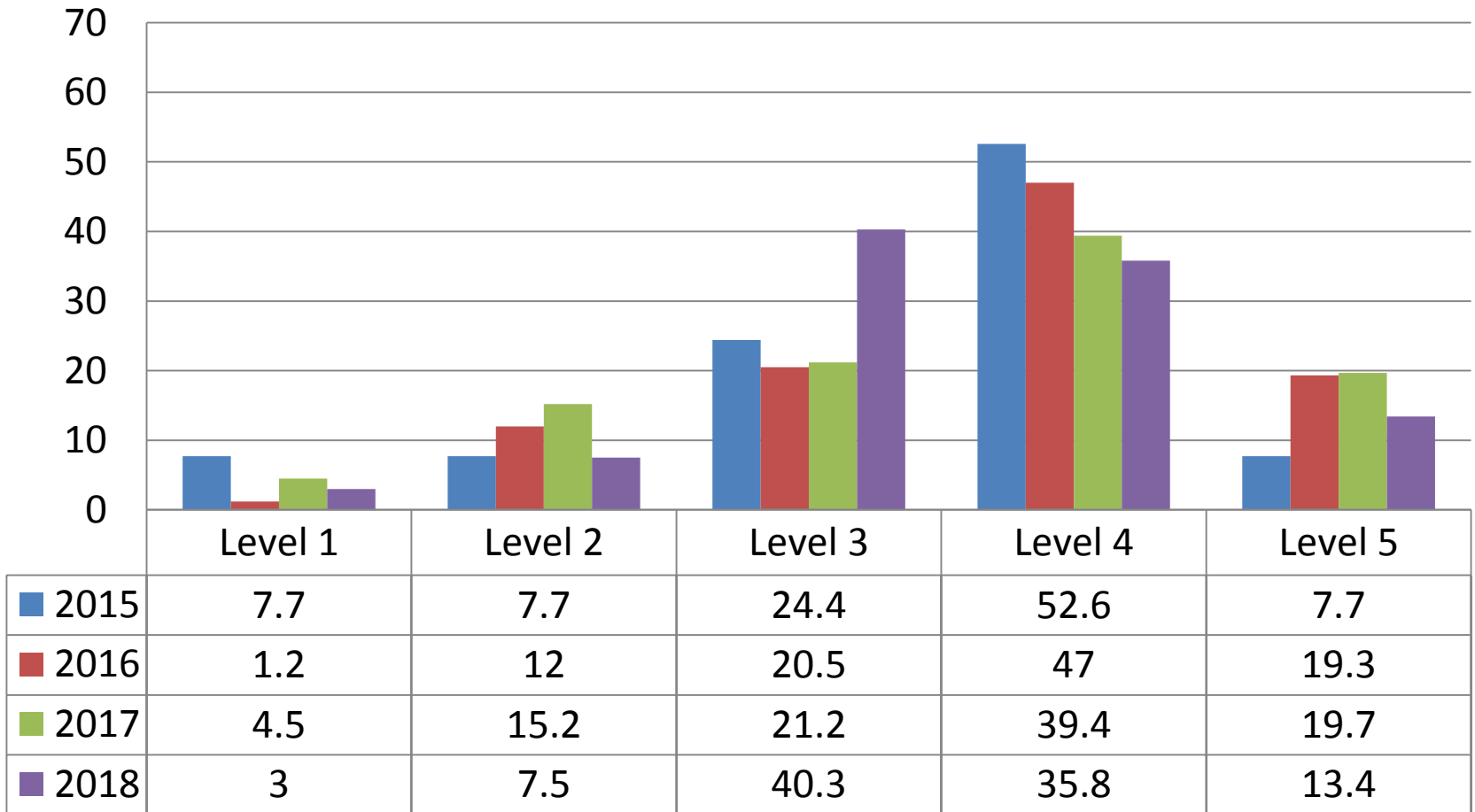


Grade 5 Mathematics

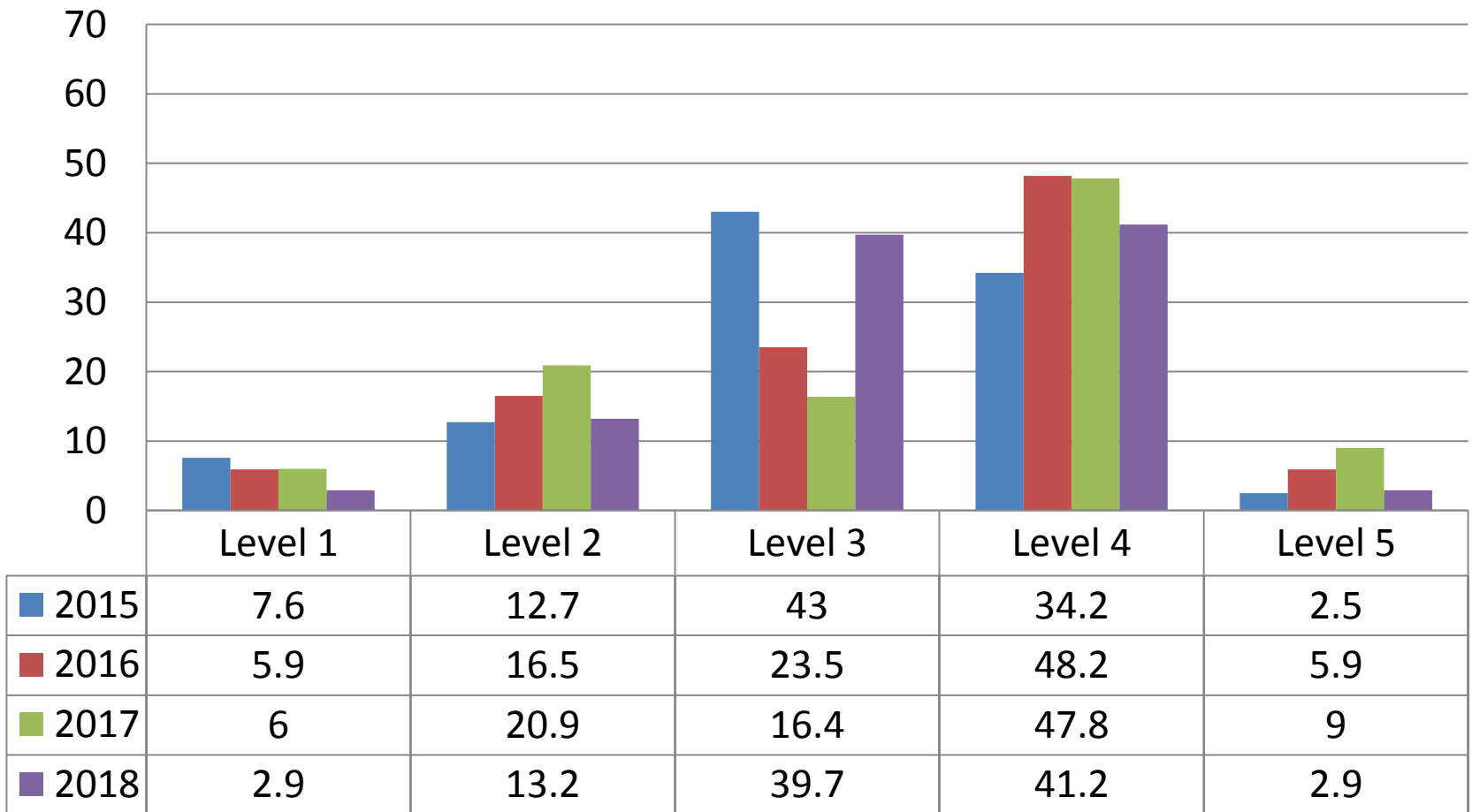
Percent Per Level



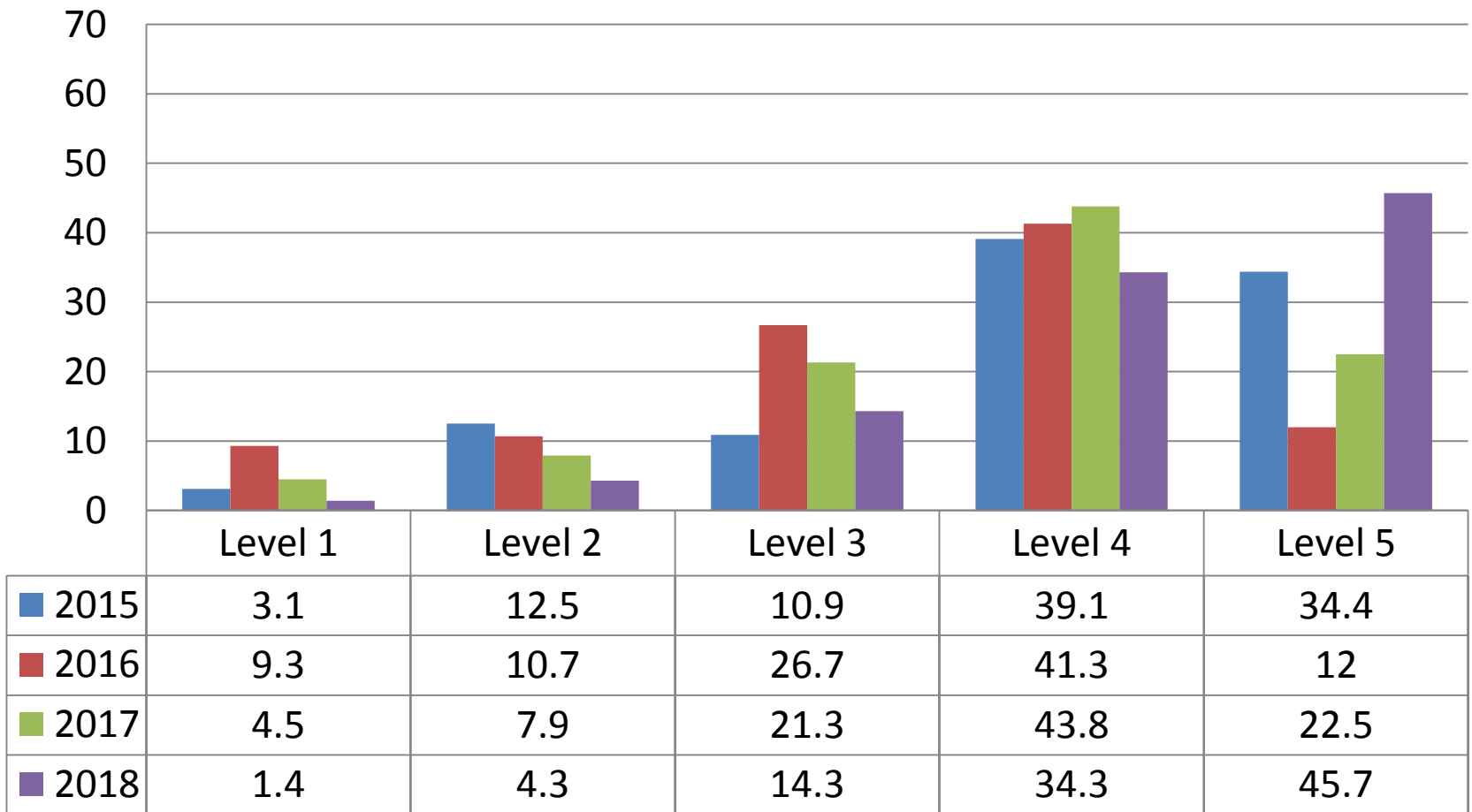
Grade 6 English Language Arts/Literacy Percent Per Level



Grade 6 Mathematics Percent Per Level

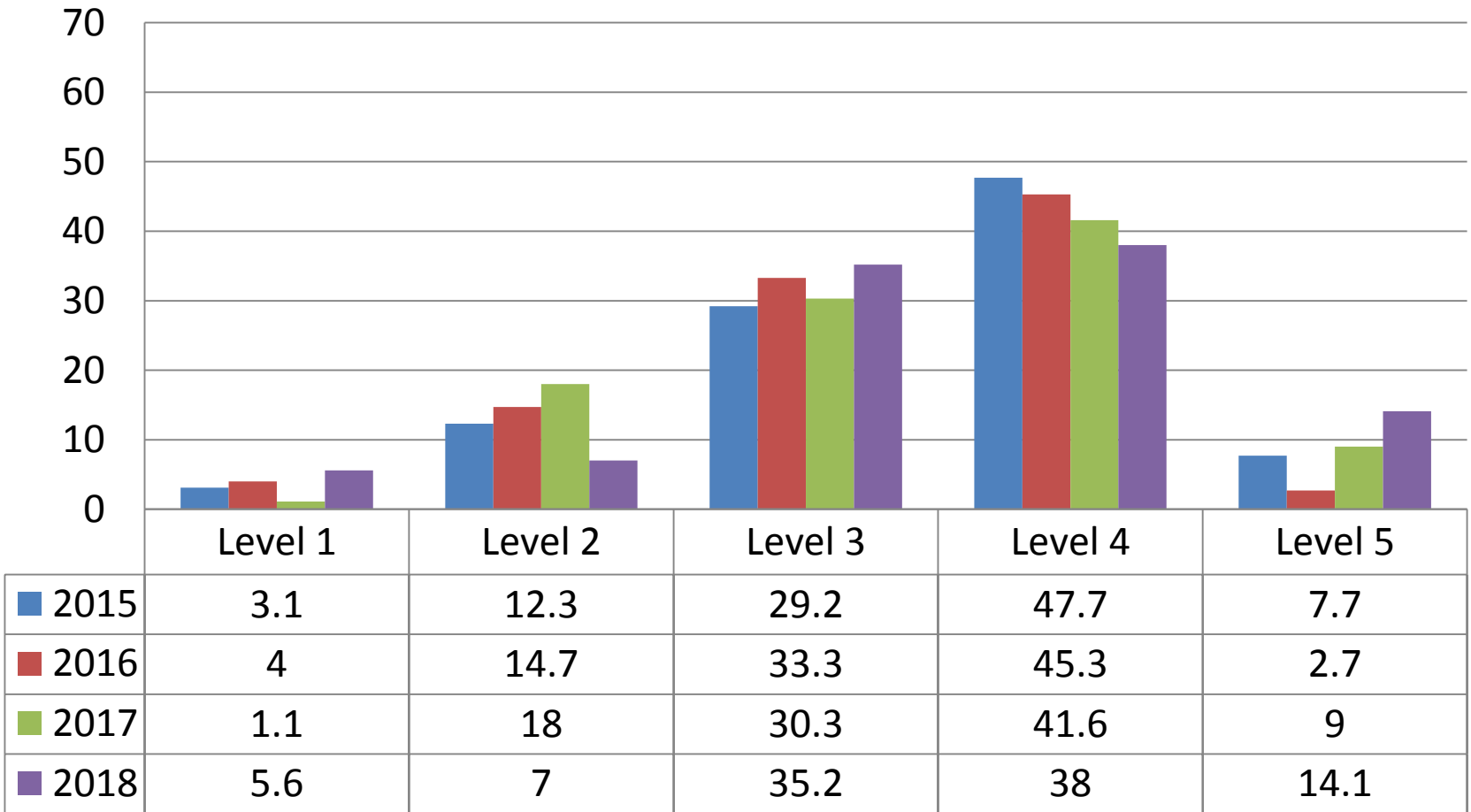


Grade 7 English Language Arts/Literacy Percent Per Level

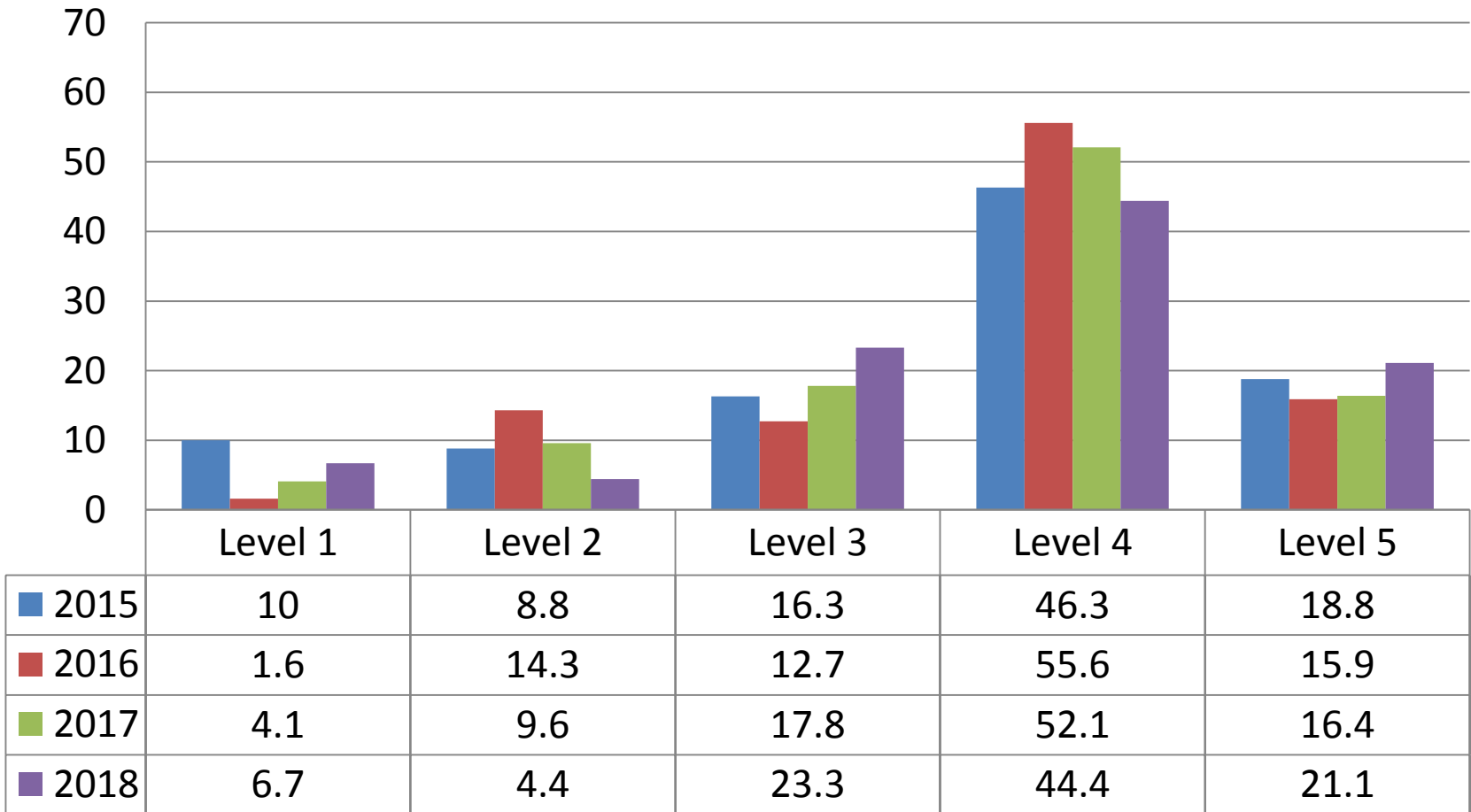


Grade 7 Mathematics

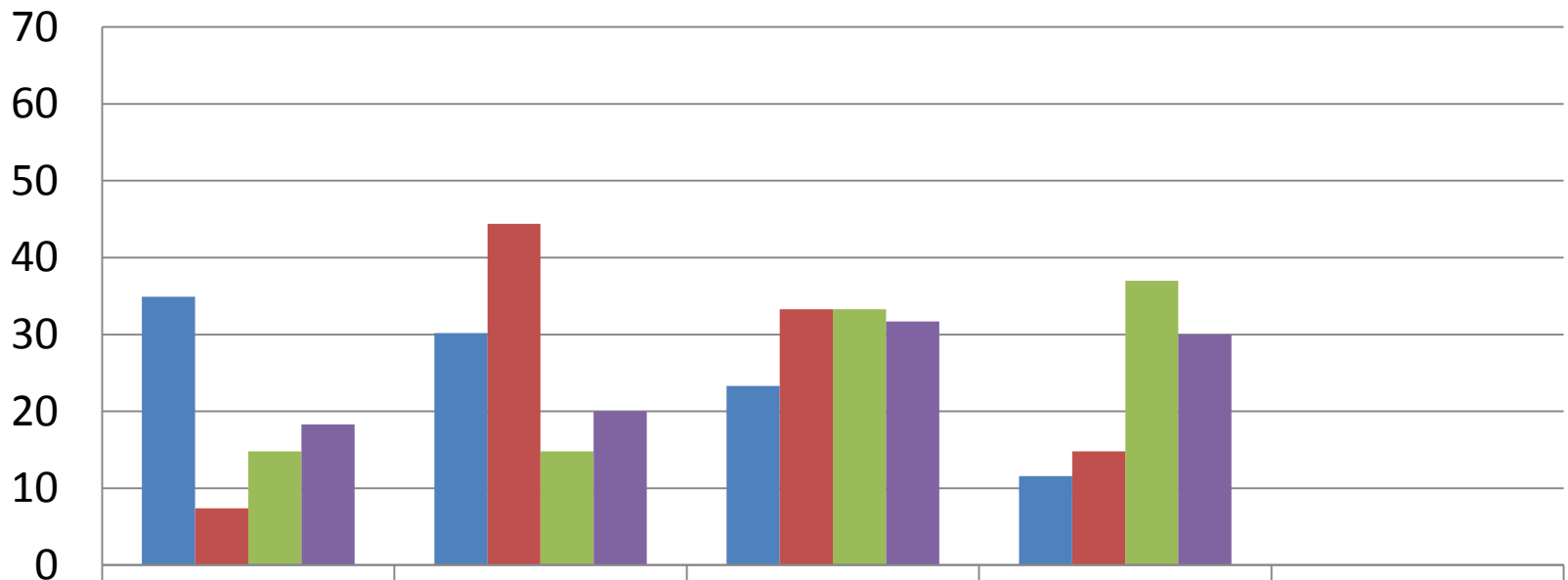
Percent Per Level



Grade 8 English Language Arts/Literacy Percent Per Level

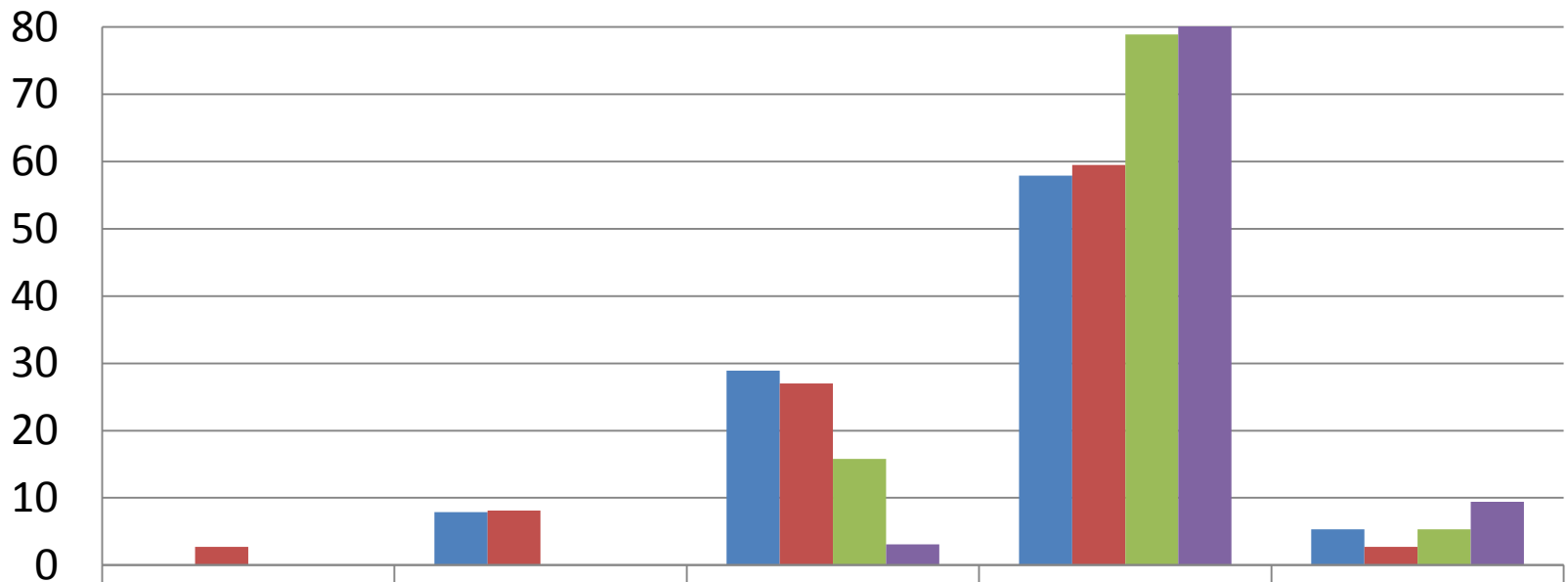


Grade 8 Mathematics Percent Per Level



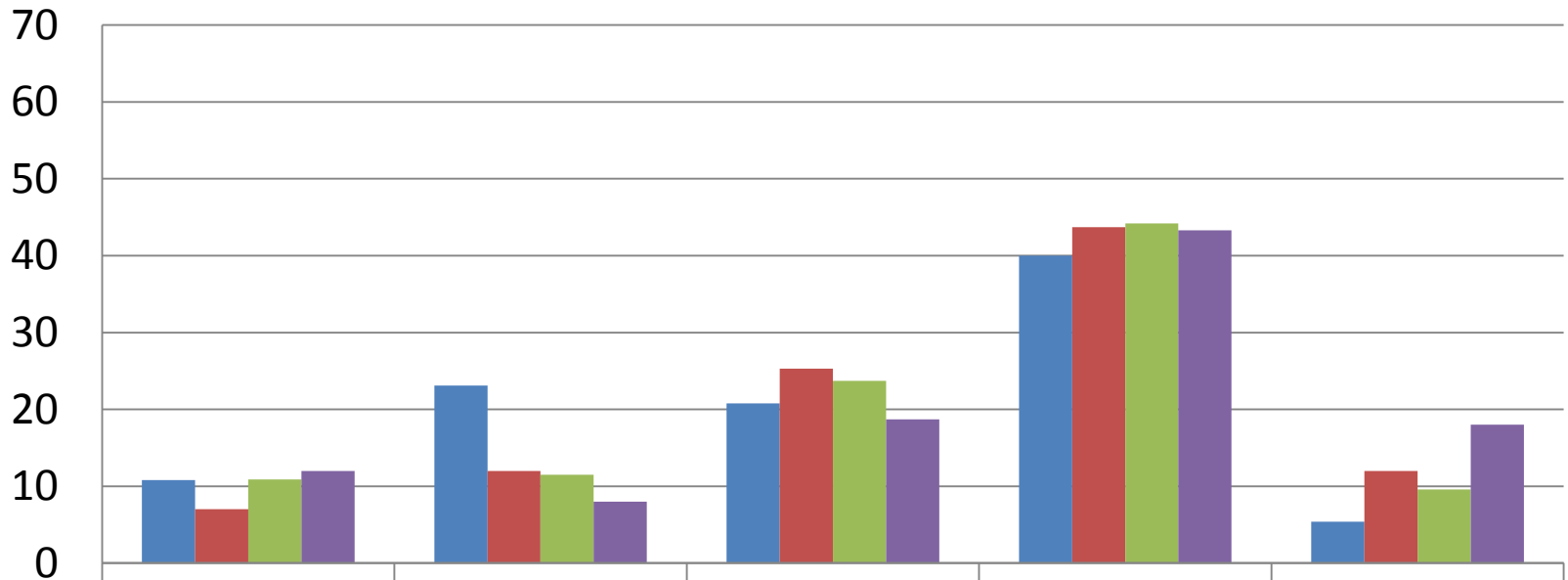
	Level 1	Level 2	Level 3	Level 4	Level 5
■ 2015	34.9	30.2	23.3	11.6	0
■ 2016	7.4	44.4	33.3	14.8	0
■ 2017	14.8	14.8	33.3	37	0
■ 2018	18.3	20	31.7	30	0

Grade 8 Algebra I Percent Per Level



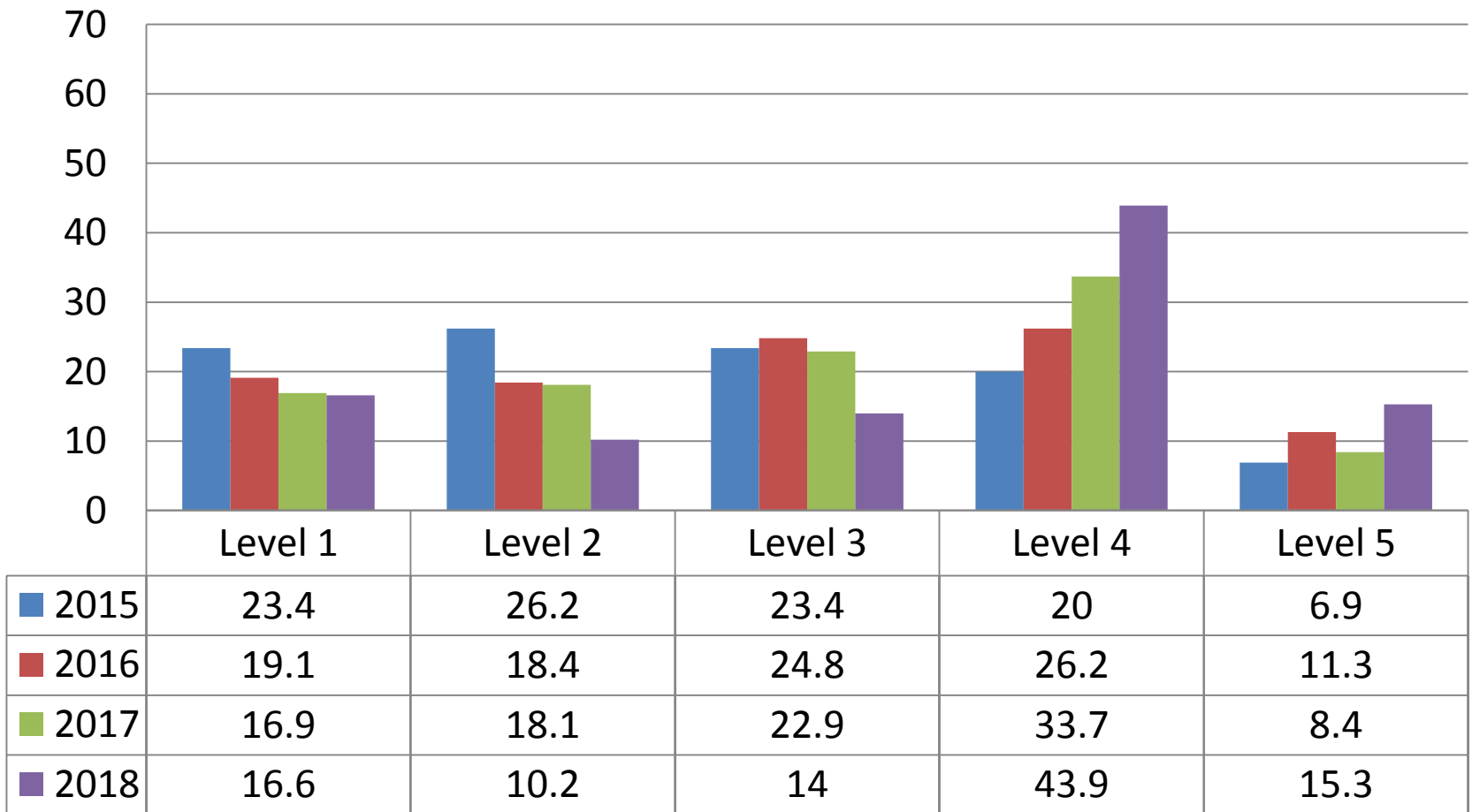
	Level 1	Level 2	Level 3	Level 4	Level 5
2015	0	7.9	28.9	57.9	5.3
2016	2.7	8.1	27	59.5	2.7
2017	0	0	15.8	78.9	5.3
2018	0	0	3.1	87.5	9.4

Grade 9 English Language Arts/Literacy Percent Per Level

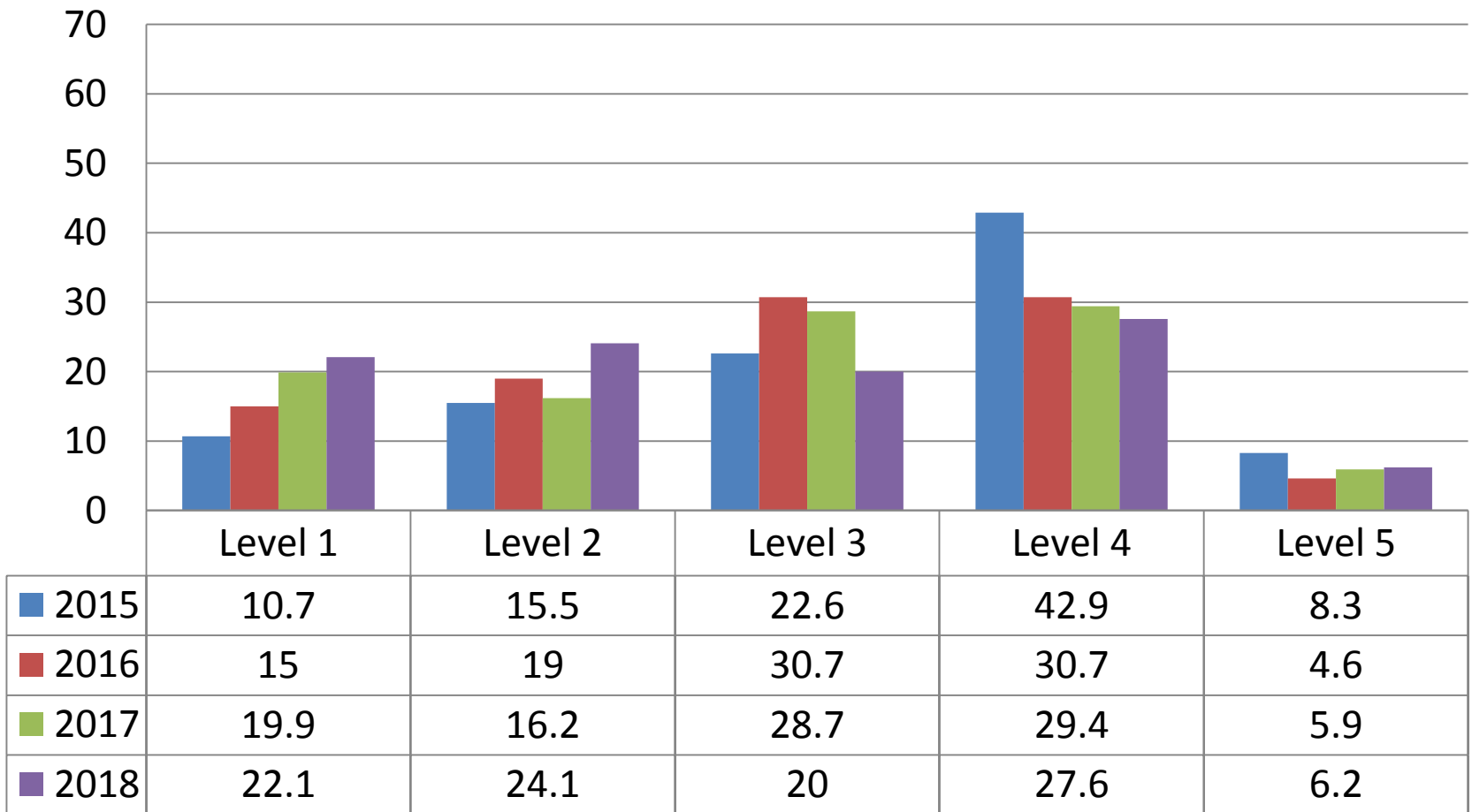


	Level 1	Level 2	Level 3	Level 4	Level 5
■ 2015	10.8	23.1	20.8	40	5.4
■ 2016	7	12	25.3	43.7	12
■ 2017	10.9	11.5	23.7	44.2	9.6
■ 2018	12	8	18.7	43.3	18

Grade 10 English Language Arts/Literacy Percent Per Level

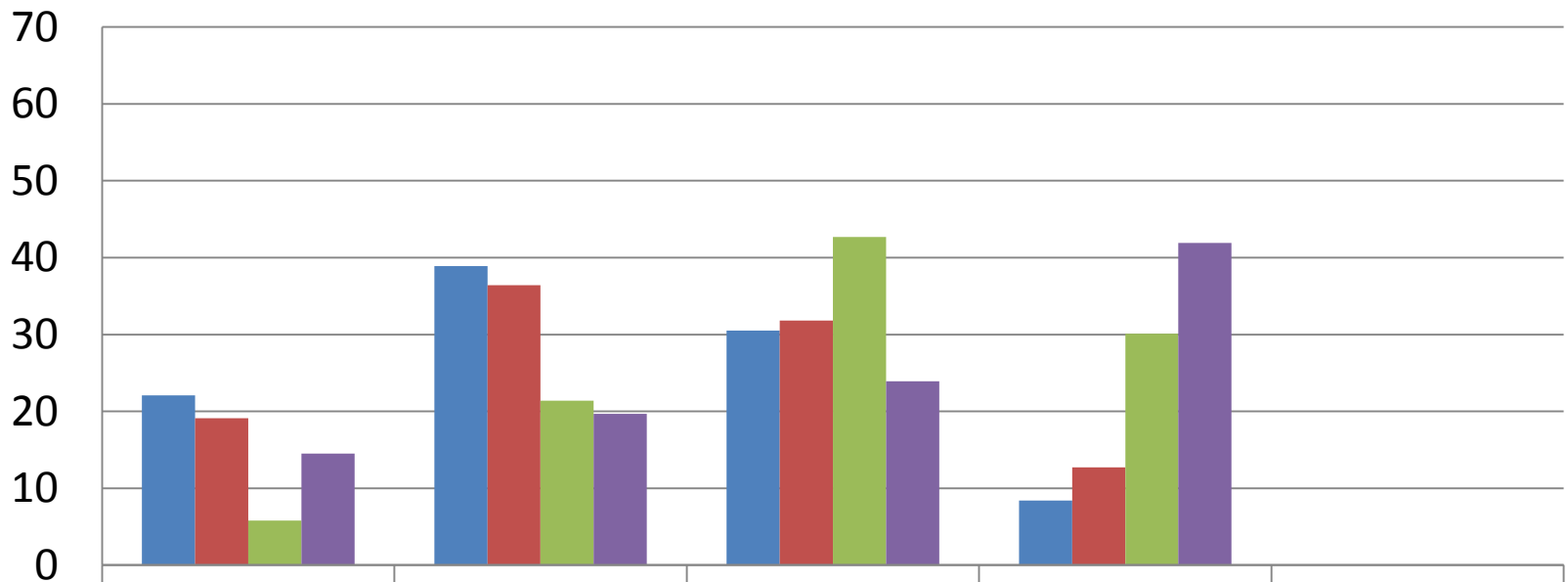


Grade 11 English Language Arts/Literacy Percent Per Level



BHS Algebra I

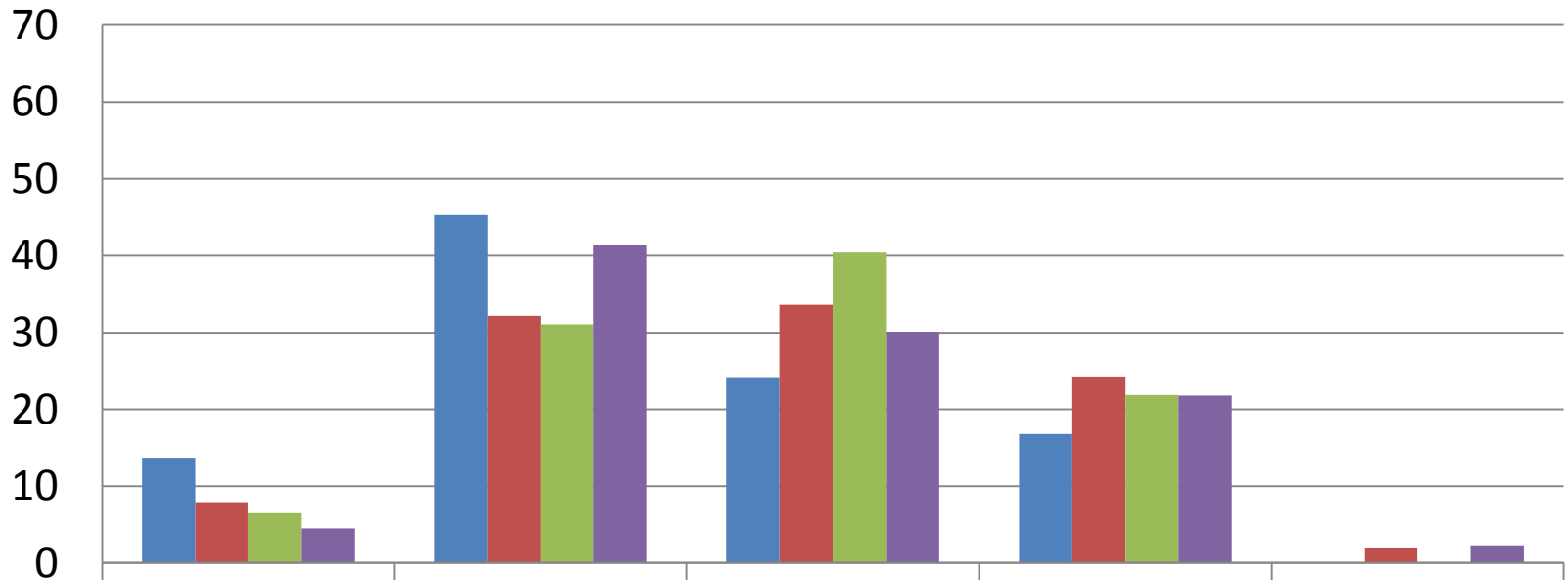
Percent Per Level



	Level 1	Level 2	Level 3	Level 4	Level 5
■ 2015	22.1	38.9	30.5	8.4	0
■ 2016	19.1	36.4	31.8	12.7	0
■ 2017	5.8	21.4	42.7	30.1	0
■ 2018	14.5	19.7	23.9	41.9	0

BHS Geometry

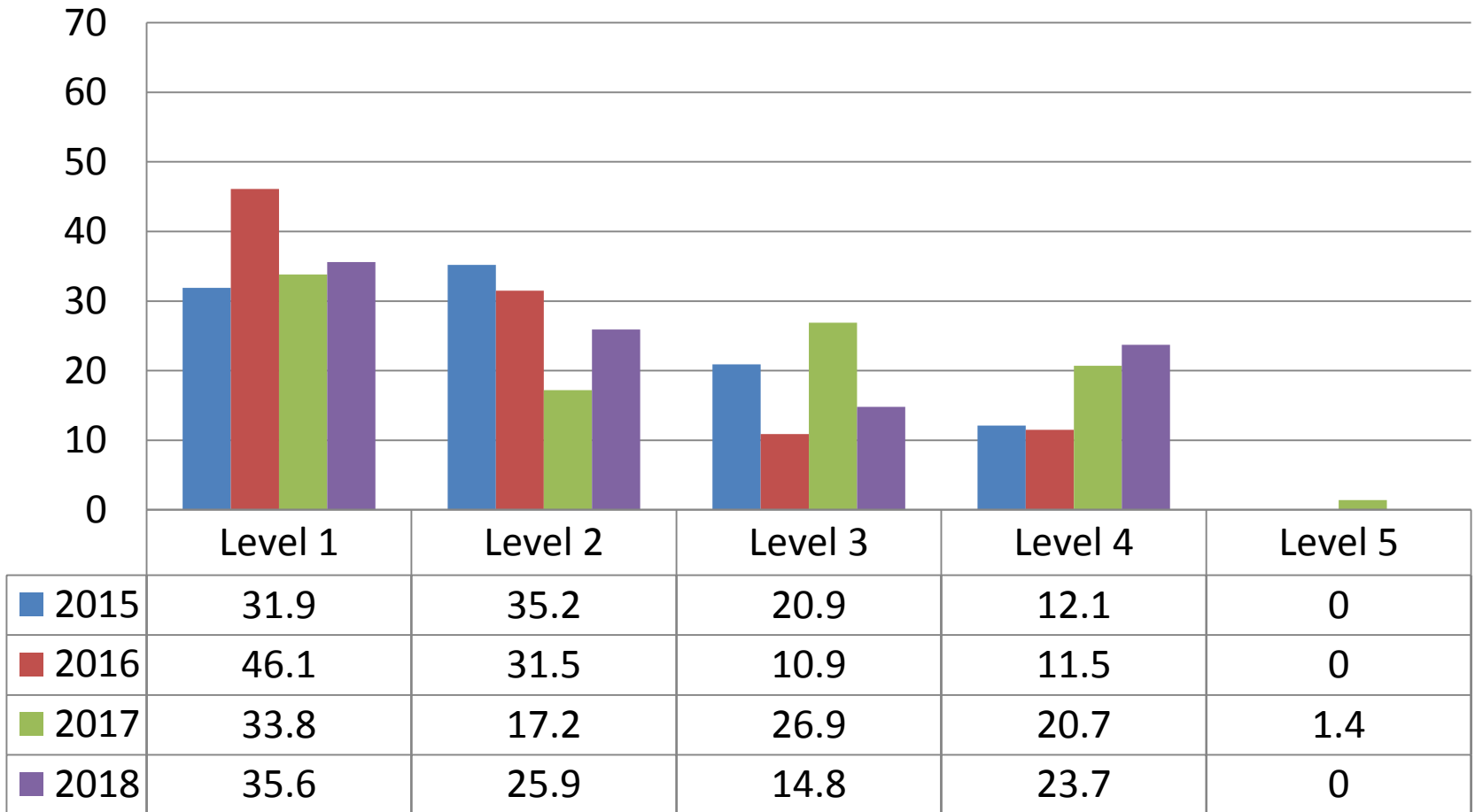
Percent Per Level



	Level 1	Level 2	Level 3	Level 4	Level 5
■ 2015	13.7	45.3	24.2	16.8	0
■ 2016	7.9	32.2	33.6	24.3	2
■ 2017	6.6	31.1	40.4	21.9	0
■ 2018	4.5	41.4	30.1	21.8	2.3

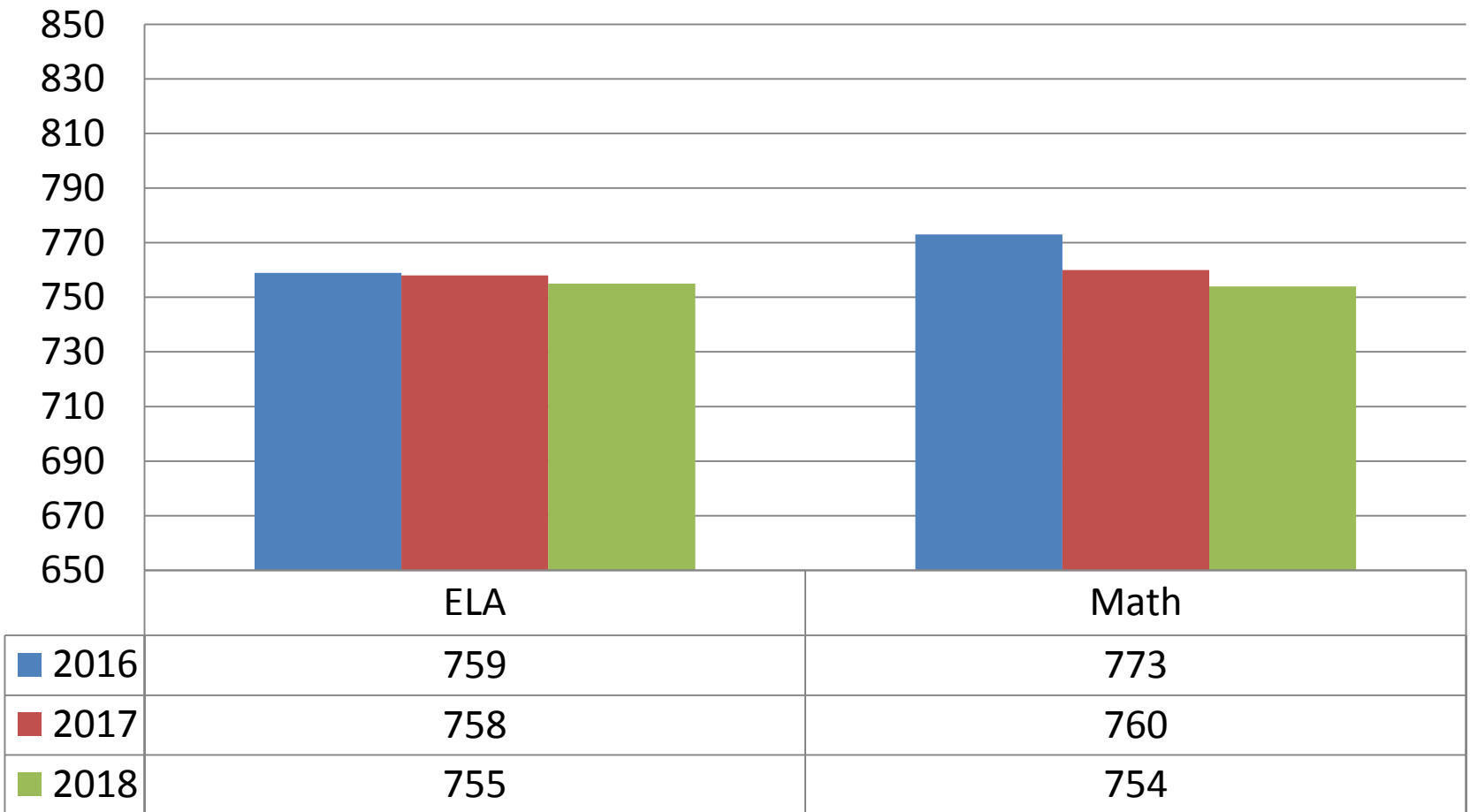
BHS Algebra II

Percent Per Level



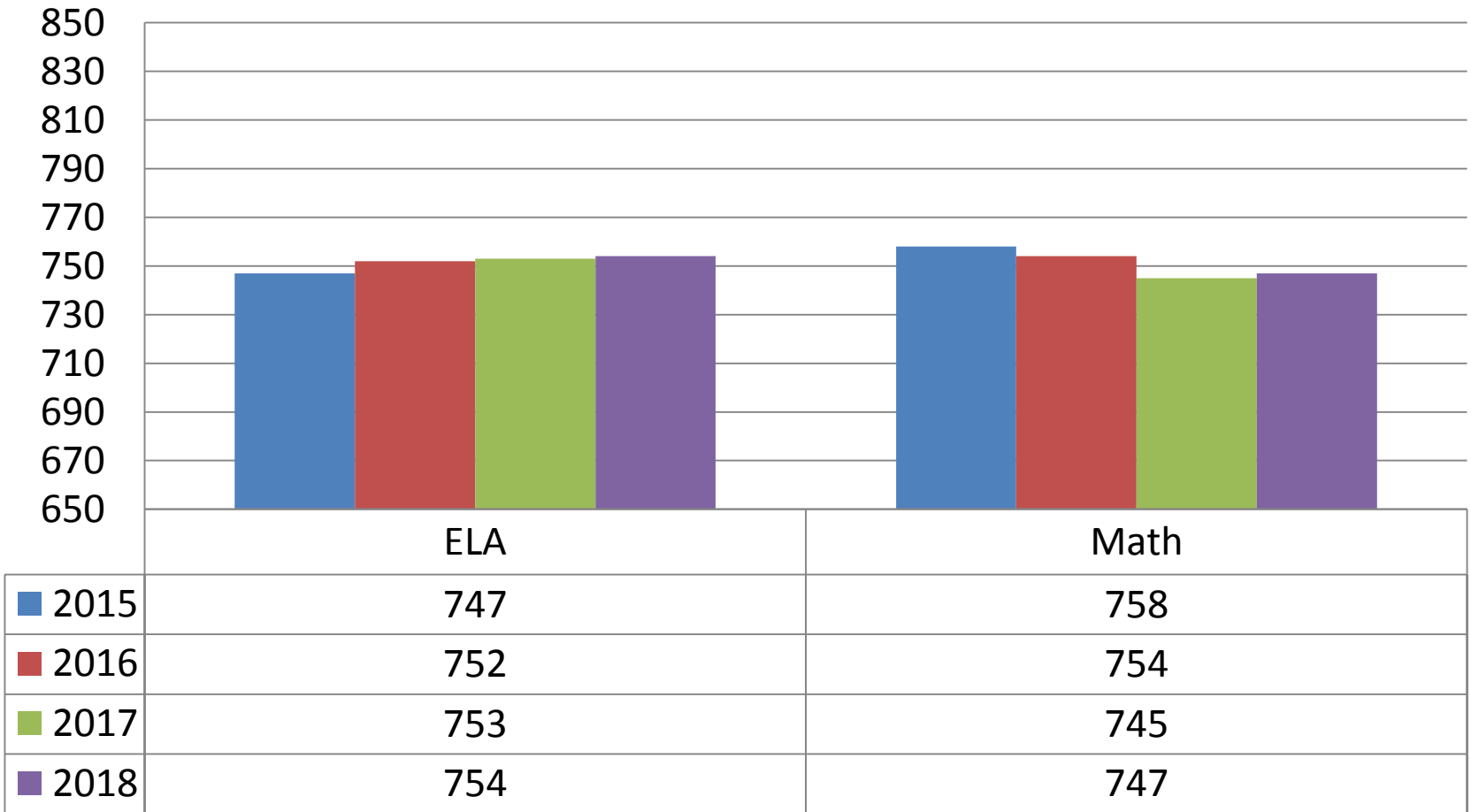
Class of 2025 Overall Scores

(Grades 3, 4, 5)



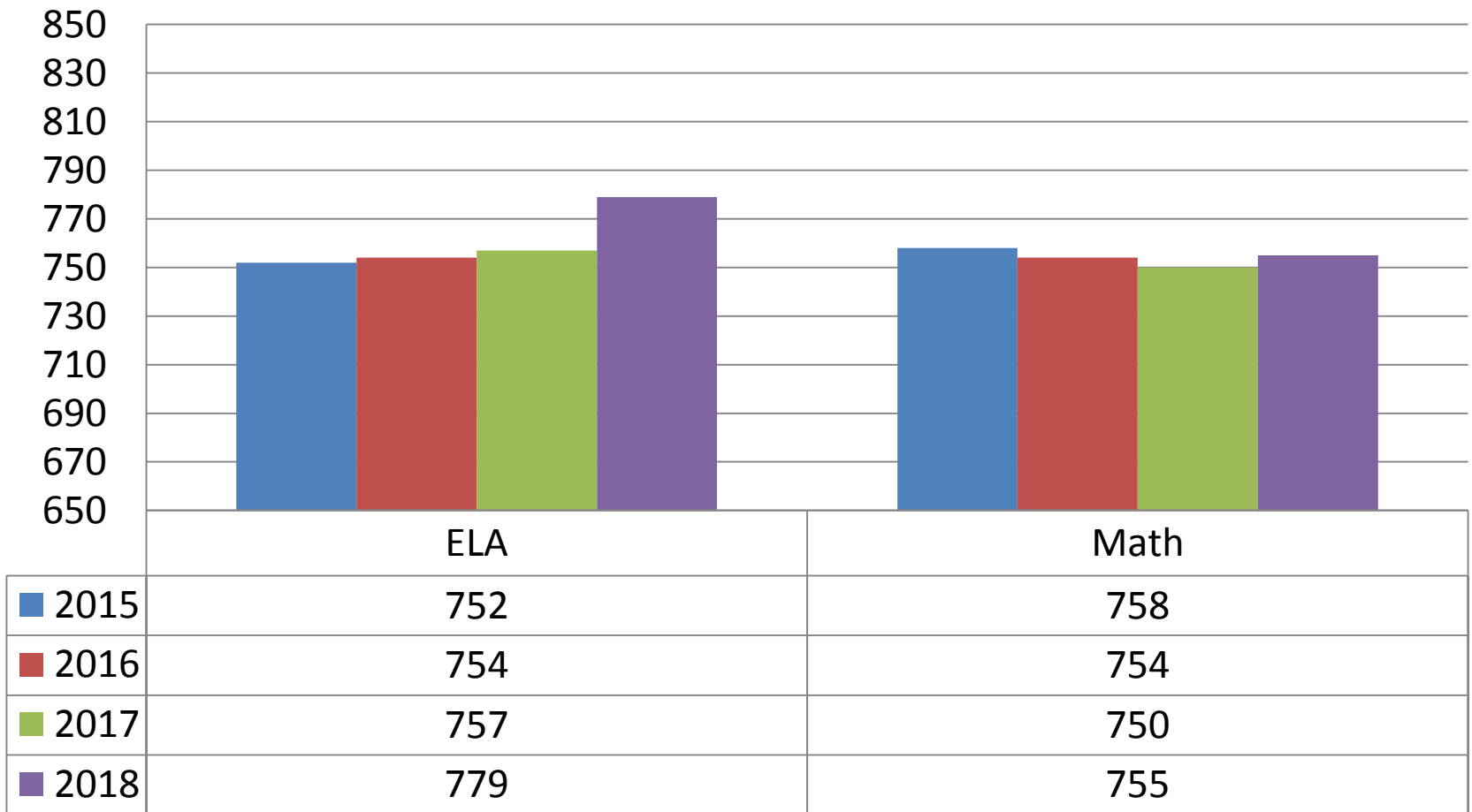
Class of 2024 Overall Scores

(Grades 3, 4, 5,6)



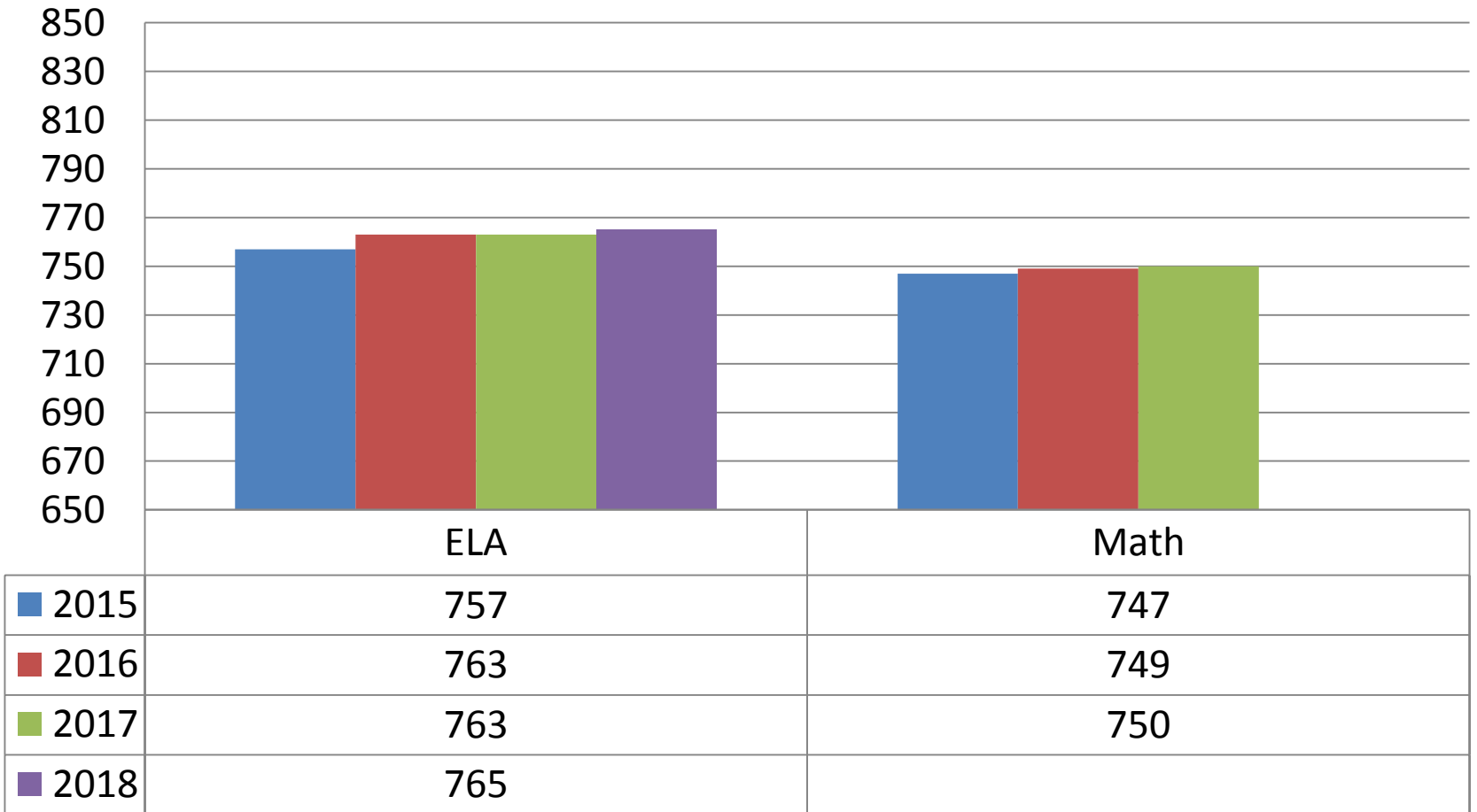
Class of 2023 Overall Scores

(Grades 4, 5, 6, 7)



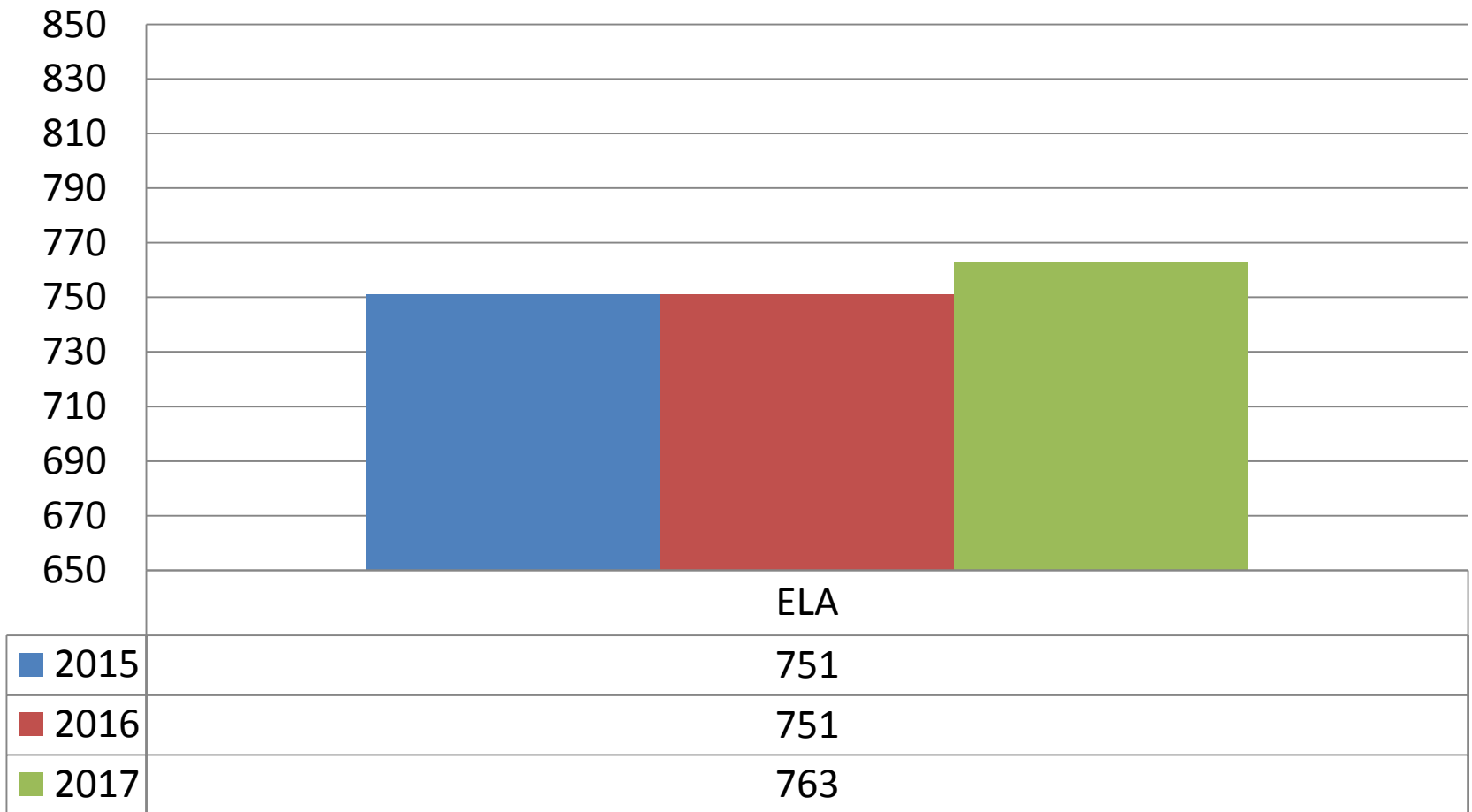
Class of 2022 Overall Scores

(Grades 5, 6, 7, 8)



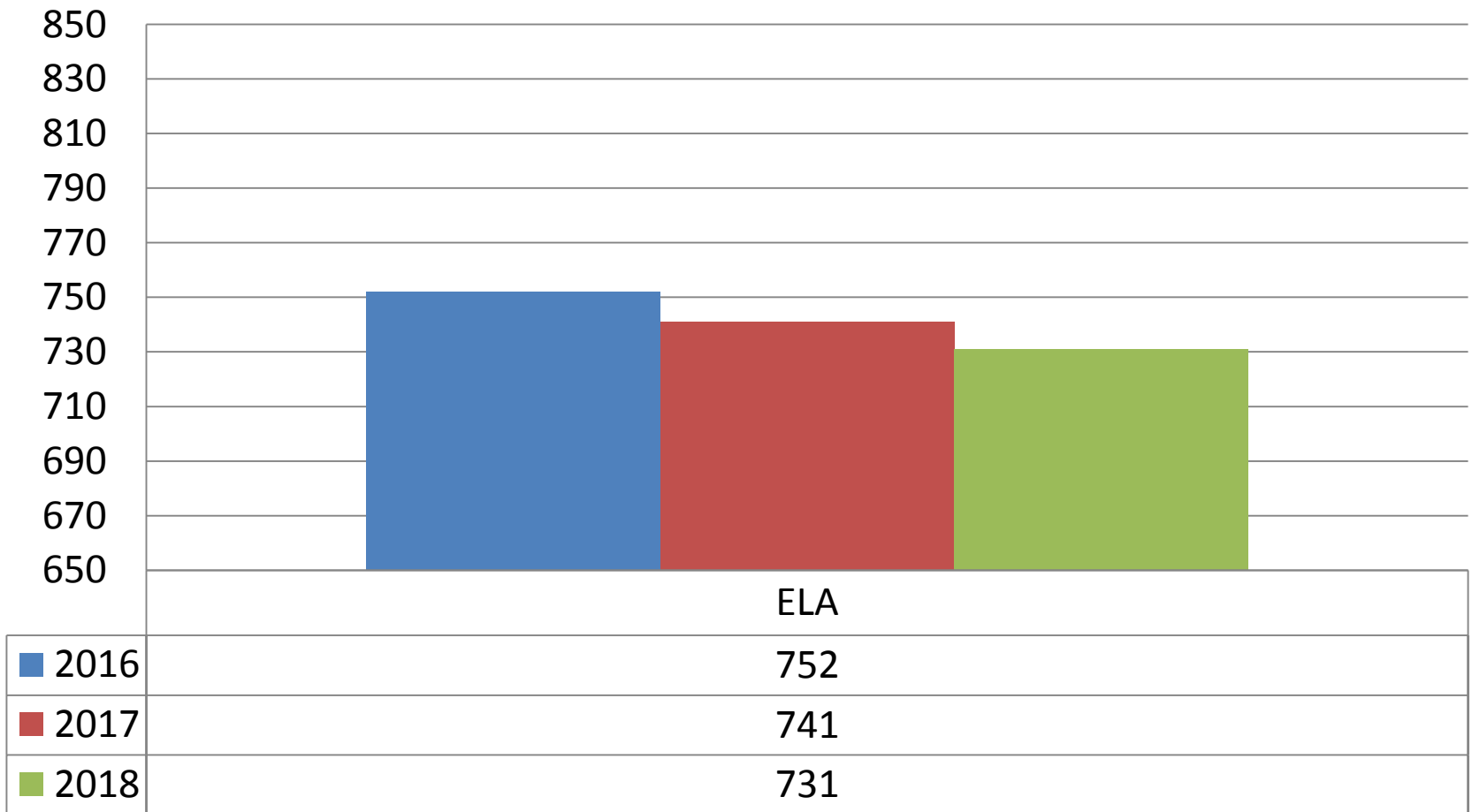
Class of 2021 Overall Scores

(Grades 6, 7, 8)



Class of 2019 Overall Scores

(Grades 9, 10, 11)





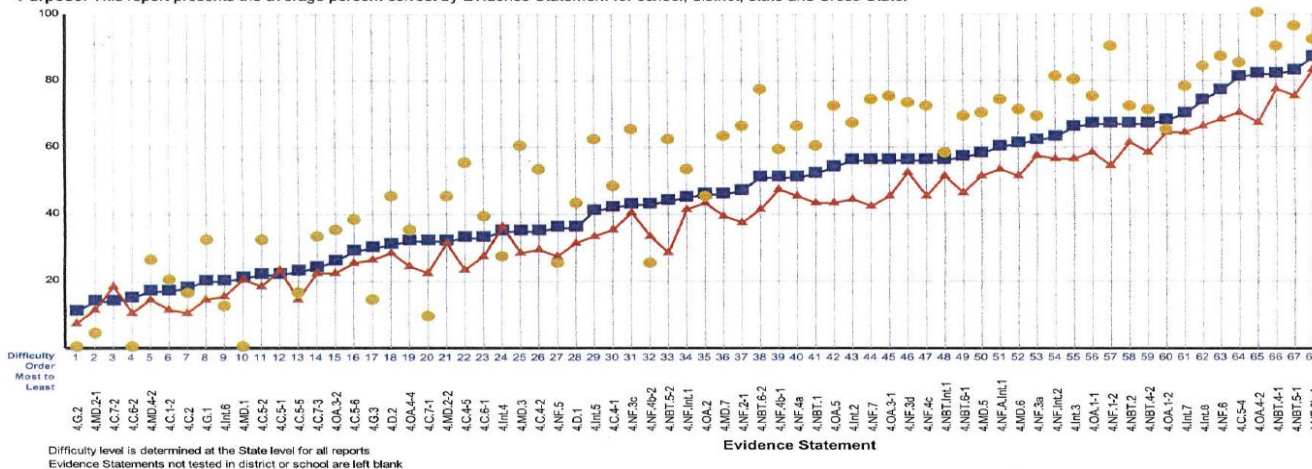
School Evidence Statement Analysis

NEW JERSEY

- ▲ Cross-State
- State
- District
- ▼ School

Students with Valid Scores (84)

Purpose: This report presents the average percent correct by Evidence Statement for school, district, state and Cross-State.



Difficulty level is determined at the State level for all reports
Evidence Statements not tested in district or school are left blank